

THOR

20/SEVENTEEN



CONTENTS

RACEWEAR KIT COMPARISON	4
MEN'S RACEWEAR	6
6 FUSE	
16 FUSE AIR	
20 PRIME	
26 PULSE	
38 PULSE AIR	
OFFROAD	40
42 TERRAIN	
44 RANGE	
46 JACKETS COMPARISON	
GLOVES	48
HELMETS	62
GOGGLES	72
COVERAGE	80
82 ROOST DEFLECTORS	
90 KNEEGUARDS / ELBOWGUARDS	
93 BELTS	
BASE LAYER	94
95 COMP GEAR	
96 SOCKS	
BOOTS	98
BAGS	100
104 HYDRATION PACKS	
YOUTH	110
112 RACEWEAR	
118 GLOVES	
120 ROOST DEFLECTORS	
122 GOGGLES	
124 GUARDS	
126 BOOTS	
127 SOCKS	
WOMEN'S	128
130 RACEWEAR	
132 OFF ROAD	
134 BOOTS / DEFLECTOR	
135 GLOVES	
MEN'S SPORTSWEAR	136
YOUTH SPORTSWEAR	146
WOMEN'S SPORTSWEAR	152
SIZING	156
PRODUCT MATRIX	158





FUSE

[P. 6-19]

Designed to thrive in any conditions, our all new FUSE kit is the swiss army knife of the 2017 line up. With a tailored chassis and pre curved knee, FUSE provides a flawless fit from head to toe. Add in our legendary durability and TPR coverage, and you have a kit that delivers the premium performance on all fronts.

BODY CONTOUR

STANDARD  AERO FIT

STRUCTURE

LIGHT WEIGHT FLEX  RUGGED DURABILITY

TPR REINFORCEMENT

MINIMUM  MAXIMUM



PRIME FIT

[P. 20-25]

PRIME FIT is our purebred race kit, as it grants uncompromising flexibility with a lightweight, form fitted chassis. Between the minimalist design and athletic fit, PRIME FIT is the perfect setup for the performance driven rider.

BODY CONTOUR

STANDARD  AERO FIT

STRUCTURE

LIGHT WEIGHT FLEX  RUGGED DURABILITY

TPR REINFORCEMENT

MINIMUM  MAXIMUM



PULSE

[P. 26-39]

As the workhorse of our racewear line up, PULSE is durable, yet light, making it one of the best values in motocross. The PULSE chassis offers extra room in key areas for the rider who prefers a more relaxed fit. Whether you're gearing up for race day, or just an afternoon in the hills, PULSE is fit for the job.

BODY CONTOUR

STANDARD  AERO FIT

STRUCTURE

LIGHT WEIGHT FLEX  RUGGED DURABILITY

TPR REINFORCEMENT

MINIMUM  MAXIMUM

KIT COMPARISON: 2017 RACEWEAR

From the wide open desert, to the freshly prepped moto track, wherever you ride, we ride with you. Our three distinct racewear lines are designed to cover all the bases from lightweight flexibility to rugged durability. Regardless of your style or preference, we have a kit for you.

While all three lines are undeniably different, there are certain standards that carry through all of our racewear. Full grain leather inner knee panels are featured on every pant for heat resistance and added comfort. Because every rider's build is unique, we included our signature side cinch on every line to provide maximum adjustability. As our FUSE and PULSE lines feature entirely new chassis, both kits received a pre-curved knee for premium comfort and fit in the active riding position in addition to a more tailored fit than our previous lines.

Every ride provides its own unique adventure, and with that comes the need for decidedly different racewear. Between our three lines, you are sure to find a kit that will suit your ride and truly enhance your experience on the motorcycle. The new standard for motocross and off road racewear has arrived, don't settle for less.



JASON / ANDERSON



ARRIVAL OF THE NEW ERA FUSE

A blank canvas provides endless opportunity. Introducing the all new FUSE™ - designed from the ground up to be our most advanced racewear kit to date. Say goodbye to flap and drag, the FUSE jersey's tailored fit reduces excess material under the arms and around the torso for improved aerodynamics. Bringing it up from the bottom, the FUSE™ pant features a pre-curved knee that enhances comfort and fit in the active rider position, while delivering our legendary durability. From the three-quarter collar to the rapid flex knee, no detail was spared in the development of this kit. Step into the future of motocross racewear with the all new FUSE™.

FUSE

JERSEY

• MINIMAL MAXIMIZED

Simplicity often goes unnoticed, which is exactly the point. Comprised and designed with less seams, means less pinch points to minimize that ride-altering chafe.

• STRATEGIC VENTING

FUSE™ has your back. With fully perforated athletic mesh placed on the back and underarms combined with 100% moisture wicking material throughout, the FUSE™ jersey keeps you cool and dry all moto long.

• THREE QUARTER COLLAR

Less seams, more comfort – That's the concept behind our all new Three Quarter Collar. Optimal stretch and maximum comfort for a care free ride.

• ADDITIONAL FEATURES

- No-fade sublimated graphics
- Rib knit on collar for proper expansion
- Drop tail design to keep jersey tucked into pant
- Heat transfer neck label

PANT

• EXPANSION ZONES

Newly designed stretch panels in the rear waist and saddle deliver a comfortable fit, regardless of your position on the bike. Experience extra room where it counts and flexibility when it counts.

• PRE-CURVED KNEE

Do you ever ride with your legs locked? Didn't think so. We designed the pre-curved knee to assume the active riding position before you ever slip the pants on. Side effects may include, but are not limited to: less bunching, reduced pinch points, and increased comfort.

• BUILT TO LAST CONSTRUCTION

Motocross is no place for the weak. With 500D Cordura fabric in the saddle, full grain leather inner knee panels, and ultra-durable dobby woven fabric throughout, the FUSE™ pant is built to withstand the brutal demands of motocross.

• ADDITIONAL FEATURES

- Small expansion stretch panels on waist
- Purpose built TPR features
- Performance mesh liner
- Interior hip pocket



HYBRID RAGLAN SLEEVE

The dual panel design delivers all the comfort and mobility of a standard raglan style sleeve with the addition of underarm vented panels that extend from your wrists to your pits.

**WAIST WRANGLER™**

Abrasion-tolerant materials, durable construction, and full grain leather knee panels provide coverage in crucial areas.

**RAPID FLEX™ KNEE**

Flexibility is key. Constant movement on the bike calls for more mobility and less restriction, which is exactly what the RAPID FLEX™ knee delivers.

FUSE DAZZ /



FLO GREEN / YELLOW

JERSEY	S	M	L	XL	2XL		
2910 -	3838	3839	3840	3841	3842		
PANT	28	30	32	34	36	38	40
2901 -	5706	5707	5708	5709	5710	5711	5712

FUSE LIT /



BLACK

JERSEY	S	M	L	XL	2XL		
2910 -	3843	3844	3845	3846	3847		
PANT	28	30	32	34	36	38	40
2901 -	5713	5714	5715	5716	5717	5718	5719





BLACK / LIME

JERSEY	S	M	L	XL	2XL		
2910 -	3868	3869	3870	3871	3872		
PANT	28	30	32	34	36	38	40
2901 -	5748	5749	5750	5751	5752	5753	5754



NAVY / RED

JERSEY	S	M	L	XL	2XL		
2910 -	3863	3864	3865	3866	3867		
PANT	28	30	32	34	36	38	40
2901 -	5741	5742	5743	5744	5745	5746	5747



ORANGE / BLACK

JERSEY	S	M	L	XL	2XL		
2910 -	3858	3859	3860	3861	3862		
PANT	28	30	32	34	36	38	40
2901 -	5734	5735	5736	5737	5738	5739	5740

MAX / NAGL



GRAY / BLACK

JERSEY	S	M	L	XL	2XL		
2910 -	3848	3849	3850	3851	3852		
PANT	28	30	32	34	36	38	40
2901 -	5720	5721	5722	5723	5724	5725	5726



BLUE / NAVY

JERSEY	S	M	L	XL	2XL		
2910 -	3853	3854	3855	3856	3857		
PANT	28	30	32	34	36	38	40
2901 -	5727	5728	5729	5730	5731	5732	5733



JEREMY / MARTIN



MARVIN / MUSQUIN

FUSE AIR

When the temperature starts to rise, you need a kit that will flip the AC switch on high. Featuring a fully redesigned chassis with new innovative materials, FUSE Air™ is the next step in the evolution of motocross racewear. Designed with the modern racer in mind, FUSE Air delivers comfort, ventilation, and durability, all in one stylish package. 30+2 in blazing heat has never felt this good.

JERSEY

- **3D HEX WEAVE™**
Optimized for maximum ventilation, the innovative 3D HEX WEAVE™ is designed to bring the cool air in and leave the dust behind. Ride fast, stay cool, stay clean.
- **MINIMAL MAXIMIZED**
Simplicity often goes unnoticed, which is exactly the point. Comprised and designed with less seams, means less pinch points to minimize that ride-altering chafe.
- **HYBRID RAGLAN SLEEVE**
The dual panel design delivers all the comfort and mobility of a standard raglan style sleeve with the addition of underarm vented panels that extend from your wrists to your pits.
- **BACK VENTING**
The FUSE Air™ has your back. Fully perforated athletic mesh and 100% moisture wicking material keeps you cool and dry all moto long.
- **THREE QUARTER COLLAR**
Less seams, more comfort – That's the concept behind our all new Three Quarter Collar. Optimal stretch and maximum comfort for a care free ride.
- **ADDITIONAL FEATURES**
 - No-fade sublimated graphics
 - Rib knit on collar for proper expansion
 - Drop tail design to keep jersey tucked into pant
 - Heat transfer neck label

PANT

- **FREE FLOW**
With high quality ventilation located throughout, the pant pulls the cool air in while pushing the hot air out. Ride fast - stay cool, simple as that.
- **WAIST WRANGLER™**
Abrasion-tolerant materials, durable construction, and full grain leather knee panels provide coverage in crucial areas
- **EXPANSION ZONES**
Newly designed stretch panels in the rear waist and saddle deliver a comfortable fit, regardless of your position on the bike. Experience extra room where it counts and flexibility when it counts.
- **PRE-CURVED KNEE**
Do you ever ride with your legs locked? Didn't think so. We designed the pre-curved knee to assume the active riding position before you ever slip the pants on. Side effects may include, but are not limited to: less bunching, reduced pinch points, and increased comfort.
- **RAPID FLEX™ KNEE**
Flexibility is key. Constant movement on the bike calls for more mobility and less restriction, which is exactly what the RAPID FLEX™ knee delivers.
- **BUILT TO LAST CONSTRUCTION**
Motocross is no place for the weak. With 500D Cordura fabric in the saddle, Aramid stitched full grain leather inner knee panels, and ultra-durable dobby woven fabric throughout, the FUSE Air™ pant is built to withstand the brutal demands of motocross.
- **ADDITIONAL FEATURES**
 - Small expansion stretch panels on waist
 - Purpose built TPR features
 - Performance mesh liner
 - Interior hip pocket

FUSE AIR PININ /



WHITE / PURPLE

JERSEY	S	M	L	XL	2XL		
2910 -	3973	3974	3975	3976	3977		
PANT	28	30	32	34	36	38	40
2901 -	5762	5763	5764	5765	5766	5767	5768

FUSE AIR LIT /



WHITE / RED

JERSEY	S	M	L	XL	2XL		
2910 -	3968	3969	3970	3971	3972		
PANT	28	30	32	34	36	38	40
2901 -	5755	5756	5757	5758	5759	5760	5761



FLO ORANGE / WHITE

JERSEY	S	M	L	XL	2XL		
2910 -	3816	3817	3818	3819	3820		
PANT	28	30	32	34	36	38	40
2901 -	5692	5693	5694	5695	5696	5697	5705



MAGENTA / YELLOW

JERSEY	S	M	L	XL	2XL		
2910 -	3821	3822	3823	3824	3825		
PANT	28	30	32	34	36	38	40
2901 -	5698	5699	5700	5701	5702	5703	5704

DEMANDS PERFECTION PRIME FIT

Everything you need - nothing you don't. When the gate drops, you need racewear that is going to perform, which is why we developed our most progressive kit to date. Featuring a fitted chassis with compression sleeves, four-way stretch fabric, and flatlock seams, the Prime Fit jersey provides a pure race fit. The lightweight, flexible pant offers unparalleled comfort and performance. To enhance durability, the pant is fabricated with double and triple stitched seams, abrasion resistant materials, and full grain leather knee panels. The PRIME FIT™ kit is designed to allow maximum mobility, comfort, and ventilation, with solid durability. Whether you're railing ruts or tapping into uncharted single track, the benefits of PRIME FIT™ are universal. Twist your throttle and enjoy responsibly.



ALEX / MARTIN

PRIME FIT

JERSEY

• RACE CUT

Fitted is fast. With a fitted chassis and compression sleeves, the PRIME FIT™ jersey provides a truly unique riding experience. The days of parachute jerseys are long behind us, one ride in Prime will have you wondering how you ever rode without it.

• FREE FLOW

In a long moto, staying cool is half of the battle. The PRIME FIT™ jersey combines moisture wicking fabrics with ventilated mesh panels under the arms and on the back to optimize cooling and air flow.

• ADDITIONAL FEATURES

- No-fade sublimated graphics
- Moisture wicking fabrics
- Rib knit on collar for proper expansion
- Heat transfer neck label

PANT

• FEATHERWEIGHT DESIGN

Don't let heavy racewear bog you down. PRIME FIT™ is designed around the notion that light is fast - less weight, less fluff, more speed.

• ULTRA-LIGHT THERMAL WELD

To enhance durability and coverage, we added extremely lightweight Thermal Weld panels in the knee and rear yoke of the pant.

• FREE FLEX™

Thanks to rib spandex expansion panels and a poly - spandex blend for the base of the chassis, PRIME FIT™ promotes omnidirectional flexibility and allows the rider to move more freely on the bike.

• PERFORMANCE COVERAGE

Abrasion-tolerant materials, durable construction, and full grain leather knee panels provide coverage in crucial areas

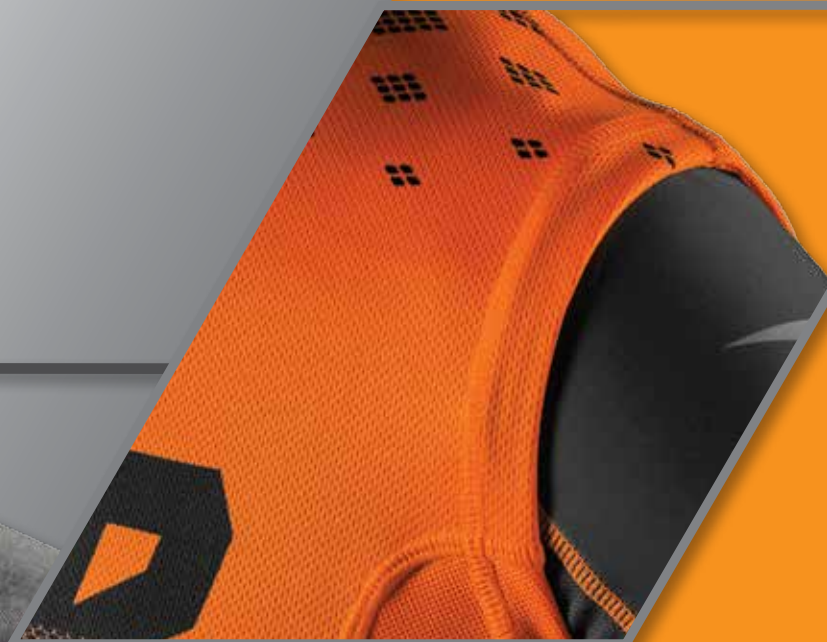
• ADDITIONAL FEATURES

- No-fade sublimated graphics
- Athletic mesh inner liner
- Ratchet style waist closure
- Adjustable hip side cinches



FREE FLEX™

Freedom is a beautiful thing. The Four Way Stretch sleeves allow for 100% unadulterated mobility and a riding experience unlike any other.

**TECHNICAL CONSTRUCTION**

Seams that go unnoticed are the best kind. Flatlock stitching provides an incredibly comfortable fit, while maintaining excellent strength and durability.

**DURABLE CONSTRUCTION**

Lightweight racewear is often thought of as weak or fragile, but in the development of PRIME FIT™, we didn't play by those rules. Constructed with abrasion resistant materials and large full grain leather inner knee panels, this pant offers class leading durability.



FLO GREEN / BLACK

JERSEY	S	M	L	XL	2XL	
2910 -	3878	3879	3880	3881	3882	
PANT	28	30	32	34	36	38
2901 -	5905	5906	5907	5908	5909	5910



FLO ORANGE / GRAY

JERSEY	S	M	L	XL	2XL	
2910 -	3873	3874	3875	3876	3877	
PANT	28	30	32	34	36	38
2901 -	5899	5900	5901	5902	5903	5904

**BLUE / NAVY**

JERSEY	S	M	L	XL	2XL	
2910 -	3883	3884	3885	3886	3887	
PANT	28	30	32	34	36	38
2901 -	5911	5912	5913	5914	5915	5916

**BLACK / WHITE**

JERSEY	S	M	L	XL	2XL	
2910 -	4225	4226	4227	4228	4229	
PANT	28	30	32	34	36	38
2901 -	6283	6284	6285	6286	6287	6288

A DIAMOND IN THE ROOST PULSE

Our all new PULSE™ line delivers functional performance at an incredible value. As the workhorse of our 2017 line-up, PULSE™ is built tough with abrasion resistant materials to withstand the test of time. Both the pant and jersey are designed from the ground up with a tailored chassis to minimize excess material and provide an exceptional fit. Wherever your ride takes you, PULSE's™ race inspired design will endure the elements with class-leading performance and style.





JEREMY / MARTIN

PULSE

JERSEY

· PERFORMANCE FIT

The cut and finish of the PULSE™ jersey allows for an exceptional fit that minimizes unnecessary material, without hindering mobility.

· AIR DRY

The physical demands of motocross are unlike that of any other sport in the world. With this in mind, we came to the realization that moisture wicking fabric was an absolute necessity. Designed to complement the tailored fit, the moisture wicking fabric pulls the moisture away from your skin to keep you cool and dry throughout your ride.

· ADDITIONAL FEATURES

- No-fade sublimated graphics
- Heat transfer neck label

PANT

· BUILT TO LAST CONSTRUCTION

With 49 years of racewear construction under our belt, we've learned a thing or two about designing and developing gear that can weather the storm that we call motocross. Abrasion resistant Polyester and Nylon are bound together with double and triple stitched seams to ensure durability ride after ride.

· ADDITIONAL FEATURES

- Purpose built TPR features
- Athletic mesh inner liner
- Interior hip pocket



**SOFTSTRETCH™ COLLAR**

Slip the PULSE™ jersey on and the first thing that you WON'T notice is the SOFTSTRETCH™ Collar. Constructed from a silky smooth four-way stretch poly, the collar is so plush that you'll likely forget that it's even there.

**PRE-CURVED KNEE**

Do you ever ride with your legs locked? Didn't think so. We designed the pre-curved knee to assume the active riding position before you ever slip the pants on. Side effects may include, but are not limited to: less bunching, reduced pinch points, and increased comfort.

**VERSATILE FIT**

If you're the guy always searching for the half size, look no further. The PULSE™ pant allows you to lock in your fit with our adjustable side cinches located on each hip. Cinch up and roll out.



BLUE / BLACK

JERSEY	S	M	L	XL	2XL	3XL				
2910 -	3918	3919	3920	3921	3922	3923				
PANT	28	30	32	34	36	38	40	42	44	
2901 -	5814	5815	5816	5817	5818	5819	5820	5821	5822	



MULTI

JERSEY	S	M	L	XL	2XL	3XL				
2910 -	3906	3907	3908	3909	3910	3911				
PANT	28	30	32	34	36	38	40	42	44	
2901 -	5796	5797	5798	5799	5800	5801	5802	5803	5804	





WHITE / BLACK

JERSEY	S	M	L	XL	2XL	3XL				
2910 -	3888	3889	3890	3891	3892	3893				
PANT	28	30	32	34	36	38	40	42	44	
2901 -	5769	5770	5771	5772	5773	5774	5775	5776	5777	



RED / BLACK

JERSEY	S	M	L	XL	2XL	3XL				
2910 -	3894	3895	3896	3897	3898	3899				
PANT	28	30	32	34	36	38	40	42	44	
2901 -	5778	5779	5780	5781	5782	5783	5784	5785	5786	



ORANGE / NAVY

JERSEY	S	M	L	XL	2XL	3XL			
2910 -	3900	3901	3902	3903	3904	3905			
PANT	28	30	32	34	36	38	40	42	44
2901 -	5787	5788	5789	5790	5791	5792	5793	5794	5795



LIME / BLACK

JERSEY	S	M	L	XL	2XL	3XL				
2910 -	3912	3913	3914	3915	3916	3917				
PANT	28	30	32	34	36	38	40	42	44	
2901 -	5805	5806	5807	5808	5809	5810	5811	5812	5813	

PULSE WHITEOUT /

PULSE BLACKOUT /



WHITE

JERSEY	S	M	L	XL	2XL	3XL	4XL
2910 -	3949	3950	3951	3952	3953	3954	3955

BLACK

PANT	28	30	32	34	36	38	40	42	44	46	48
2901 -	5850	5851	5852	5853	5854	5855	5856	5857	5858	5859	5860

BLACK

JERSEY	S	M	L	XL	2XL	3XL	4XL
2910 -	3942	3943	3944	3945	3946	3947	3948

PANT	28	30	32	34	36	38	40	42	44	46	48
2901 -	5850	5851	5852	5853	5854	5855	5856	5857	5858	5859	5860



MIDNIGHT

JERSEY	S	M	L	XL	2XL	3XL				
2910 -	3924	3925	3926	3927	3928	3929				
PANT	28	30	32	34	36	38	40	42	44	
2901 -	5823	5824	5825	5826	5827	5828	5829	5830	5831	



NAVY / LIME

JERSEY	S	M	L	XL	2XL	3XL			
2910 -	3930	3931	3932	3933	3934	3935			
PANT	28	30	32	34	36	38	40	42	44
2901 -	5832	5833	5834	5835	5836	5837	5838	5839	5840



BLACK / ORANGE

JERSEY	S	M	L	XL	2XL	3XL			
2910 -	3936	3937	3938	3939	3940	3941			
PANT	28	30	32	34	36	38	40	42	44
2901 -	5841	5842	5843	5844	5845	5846	5847	5848	5849



AARON / PLESSINGER

PULSE AIR

JERSEY

- **MAXIMUM VENTILATION**
Fully vented mesh panels maximizes air flow throughout and keeps you cool
- **VERSATILE FIT**
Set-in style sleeves tailor to the body's shape and form while accenting all riding styles
- **MOISTURE WICKING**
100% polyester jersey material wicks away sweat and helps keep you cool
- **COMFORT PANELS**
4-way stretch panels in the cuffs and collar provide an excellent feel and minimal chafing
- **ADDITIONAL FEATURES**
 - Sublimated no fade graphics
 - Heat transferred neck label

PANT

- **MAXIMUM VENTILATION**
Fully perforated vented panels maximizes air flow throughout and keeps you cool
- **PRE-CURVED SHAPE**
The pre-curved chassis shape provides maximum comfort while in the rider attack or sitting positions
- **VERSATILE FIT**
Adjustable hip side cinches and ratchet-style closure tailors to the unique build of every rider
- **DURABLE CONSTRUCTION**
Polyester and nylon are combined with double and triple stitching for a pant that is made to last
- **PERFORMANCE COVERAGE**
Abrasion-tolerant materials, durable construction, and full grain leather knee panels provide coverage in crucial areas
- **ADDITIONAL FEATURES**
 - Purpose built TPR features
 - Athletic mesh liner
 - Interior hip pocket



PULSE AIR AKTIV /



CACTUS

JERSEY	S	M	L	XL	2XL	3XL			
2910 -	3956	3957	3958	3959	3960	3961			
PANT	28	30	32	34	36	38	40	42	44
2901 -	5861	5862	5863	5864	5865	5866	5867	5868	5869

PULSE AIR COVERT /



SAND

JERSEY	S	M	L	XL	2XL	3XL				
2910 -	3962	3963	3964	3965	3966	3967				
PANT	28	30	32	34	36	38	40	42	44	
2901 -	5870	5871	5872	5873	5874	5875	5876	5877	5878	



WHERE THE PAVEMENT ENDS OFF ROAD



TERRAIN

JERSEY

- **COVERAGE**
Abrasion resistant material on sleeves and shoulders
- **INCREASED VENTILATION**
Vented side panels and 3 quarter chest zipper helps keep you cool
- **MOISTURE WICKING**
Polyester jersey main fabric material wicks away sweat
- **ADDITIONAL FEATURES**
 - Sublimated no fade graphics
 - Rib knit on collar for proper expansion
 - Heat transferred neck label
 - Reflective accents enhance visibility

PANT

- **OVER THE BOOT CONSTRUCTION**
Non-tapered lower leg construction allows for easy over the boot placement
- **CONVERTIBLE**
Hook and Loop panels above the knee can be opened to expose air intakes
- **STORAGE**
Two zippered pockets for storage
- **DURABLE CONSTRUCTION**
Polyester and nylon are combined with double stitch for a pant that is made to last
- **SPECIALIZED FIT**
Adjustable side cinches, snap buttons, and ratchet-style closure tailors to the unique build of every rider
- **PERFORMANCE COVERAGE**
Abrasion-tolerant materials, durable construction, and full grain leather knee panels provide coverage in crucial areas
- **ADDITIONAL FEATURES**
 - Refined chassis for increased comfort and performance
 - Interior hip pocket
 - Comfort mesh liner
 - Purpose built TPR
 - Internal gaiter at boot
 - Adjustable snap button ankle closure
 - Reflective graphic accents
 - YKK zippers
 - Sublimated no fade graphics





CAMO

JERSEY	S	M	L	XL	2XL	3XL				
2910 -	3832	3833	3834	3835	3836	3837				
PANT	28	30	32	34	36	38	40	42	44	
2901 -	5890	5891	5892	5893	5894	5895	5896	5897	5898	



BLACKOUT

JERSEY	S	M	L	XL	2XL	3XL					
2910 -	3826	3827	3828	3829	3830	3831					
PANT	28	30	32	34	36	38	40	42	44	46	48
2901 -	5879	5880	5881	5882	5883	5884	5885	5886	5887	5888	5889

RANGE / JACKET

- YKK® Zippers, taped seams and Hipora coating for increased water resistance
- Lite-prene lined collar for comfort
- 2-way front zipper adapts to riding position
- Full mesh liner for breathability
- Oversized pit zip vents in addition to front intake vents
- 3-fold accordion elbows for flexibility
- Hook and loop gaiter cuff, collar and zipper flap
- Rear storage pocket
- Zip-off sleeves
- Reflective trim enhances visibility

PANT

- Pre-curved knees for better fitment
- Water resistant yet breathable construction
- Large cargo pocket for storage
- Ballistic nylon overlays in high wear areas
- Custom Thor waist closure plus hook and loop adjustable side cinches
- Leather inner knee panels for heat resistance and durability





BLACK / CHARCOAL

JACKET	M	L	XL	2XL	3XL					
2920 -	0403	0404	0405	0406	0407					
PANT	28	30	32	34	36	38	40	42	44	
2901 -	5603	5604	5605	5606	5607	5608	5609	5610	5611	



CHARCOAL / ORANGE

JACKET	M	L	XL	2XL	3XL			
2920 -	0413	0414	0415	0416	0417			
PANT	30	32	34	36	38	40	42	44
2901 -	5622	5623	5624	5625	5626	5627	5628	5629

PHASE JACKET /

- Zip-off sleeves quickly convert jacket to vest
- Rear cargo pocket for essentials and sleeve storage
- 2-way front zip adapts to riding position
- Pre-curved elbows
- Interior drawstring waist closure
- Hook and loop gaiters cuffs
- Internal fleece lined audio pocket
- Oversized front and rear exhaust vents prevent overheating
- Rear cargo pocket with waist belt allows the jacket to be packed into itself and worn as a fanny pack

BLK/CHR	M	L	XL	2XL	3XL
2920-	0418	0419	0420	0421	0422
CMT/NAVY	M	L	XL	2XL	3XL
2920-	0423	0424	0425	0426	0427
CHR/ORG	M	L	XL	2XL	3XL
2920-	0428	0429	0430	0431	0432



BACK VIEW



BLACK/CHARCOAL

RAIN JACKET /

- 100% PVC construction
- Raglan sleeves with underarm mesh panels for ventilation
- Translucent material allows for jersey to be seen underneath
- Rear exhaust vents allow hot air to escape
- Waterproof zipper
- Elastic binding at collar, cuffs and waist

CLEAR	M	L	XL	2XL	3XL
2854-	0140	0141	0142	0143	0144



CEMENT/NAVY



CHARCOAL/ORANGE



CLEAR

PACK JACKET /

- Jacket packs easily into pouch with belt for storage while riding
- Rear exhaust vents allow hot air to escape
- Soft dimple mesh lined collar for comfort
- Front and rear storage pockets
- Waterproof membrane shell with taped seams and water resistant zippers
- Adjustable drawstring waist closure
- Elastic cuffs

BLK/CHR	M	L	XL	2XL	3XL
2920-	0433	0434	0435	0436	0437
CMT/NAVY	M	L	XL	2XL	3XL
2920-	0438	0439	0440	0441	0442
CHR/ORG	M	L	XL	2XL	3XL
2920-	0443	0444	0445	0446	0447



CEMENT/NAVY



BLACK/CHARCOAL



CHARCOAL/ORANGE



RAIN SUIT /

- **CONSTRUCTION**
Thermal welded seams for a dry experience
- **ADDITIONAL FEATURES**
 - Reflective Thor branding
 - Zipper and button snap closures
 - Elastic waistband
 - Jacket Pockets
 - Hood cinch
 - Built-in hood visor
 - Upper back and arm pit ventilation ports

BLACK	M	L	XL	2XL	3XL
2851-	0464	0465	0466	0467	0468

2017 GLOVE COMPARISON:

As we continue to push the boundaries of motocross and off road racewear, we're proud to introduce four all-new gloves with innovative features and designs. The INVERT is a completely fresh take on the minimalist glove. With inverted seams and a fully perforated single layer palm, the INVERT provides an unbelievably comfortable fit. Walking the line between lightweight comfort and modest coverage, our DRAFT glove is built with low profile structure and integrated stretch panels for premium performance on the track or

trail. For the more rugged adventures, the REBOUND glove is constructed with a DURATEK knuckle that offers premium coverage without sacrificing flexibility and articulation. Designed to handle the most brutal conditions, the DEFEND glove offers maximum coverage and durability with integrated TPR's and a full grain leather palm. Whether you're an adventure rider or a die-hard racer, we have the perfect glove to connect you with your machine.



REBOUND

(P. 50-51)

PALM

SINGLE LAYER MULTI LAYER

STRUCTURE

LIGHT WEIGHT RUGGED DURABILITY

TPR REINFORCEMENT

MINIMUM MAXIMUM



DRAFT

(P. 52-53)

PALM

SINGLE LAYER MULTI LAYER

STRUCTURE

LIGHT WEIGHT RUGGED DURABILITY

TPR REINFORCEMENT

MINIMUM MAXIMUM



FLOW

(P. 54)

PALM

SINGLE LAYER MULTI LAYER

STRUCTURE

LIGHT WEIGHT RUGGED DURABILITY

TPR REINFORCEMENT

MINIMUM MAXIMUM



DEFEND

(P. 55)

PALM

SINGLE LAYER MULTI LAYER

STRUCTURE

LIGHT WEIGHT RUGGED DURABILITY

TPR REINFORCEMENT

MINIMUM MAXIMUM



INVERT

(P. 56-57)

PALM

SINGLE LAYER  MULTI LAYER

STRUCTURE

LIGHT WEIGHT  RUGGED DURABILITY

TPR REINFORCEMENT

MINIMUM  MAXIMUM



SPECTRUM

(P. 58-59)

PALM

SINGLE LAYER  MULTI LAYER

STRUCTURE

LIGHT WEIGHT  RUGGED DURABILITY

TPR REINFORCEMENT

MINIMUM  MAXIMUM



VOID

(P. 60-61)

PALM

SINGLE LAYER  MULTI LAYER

STRUCTURE

LIGHT WEIGHT  RUGGED DURABILITY

TPR REINFORCEMENT

MINIMUM  MAXIMUM

REBOUND GLOVE /

- **ENHANCED COVERAGE**
The all new lightweight DURATEK knuckle panel, multiple material layers and neoprene cuff provide durable coverage.
- **FLEXIBLE**
Strategically placed 4-way stretch materials for optimum mobility.
- **CUSTOM FIT**
Hook and loop closure system
- **ADDITIONAL FEATURES**
 - Notched wrist opening provides ease of access
 - Mesh finger gussets for breathability and added comfort
 - Double layer palm with perforations and overlay
 - Silicone treated finger tips
 - Wrapped thumb and gripping points for added durability

BLK/LIME	XS	S	M	L	XL	2XL
3330 -	3876	3877	3878	3879	3880	3881
BLK/WHT	XS	S	M	L	XL	2XL
3330 -	3870	3871	3872	3873	3874	3875
CHAR/ORG	XS	S	M	L	XL	2XL
3330 -	3882	3883	3884	3885	3886	3887
NAVY/YEL	XS	S	M	L	XL	2XL
3330 -	3894	3895	3896	3897	3898	3899
RED	XS	S	M	L	XL	2XL
3330 -	3888	3889	3890	3891	3892	3893



BLACK/LIME



PALM VIEW



BLACK/WHITE



CHARCOAL/ORANGE



NAVY/YELLOW



RED

DRAFT GLOVE /

- **MAXIMUM FLEX**
4-way stretch mesh and expansion panels allow full range of motion in hands.
- **OPTIMAL AIR FLOW**
Venting mesh throughout backhand and perforated palms keep hands cool throughout.
- **STRUCTURAL PRINT**
Silicone pattern print on backhand adds minimalistic structural element.
- **ADDITIONAL FEATURES**
 - Notched wrist opening provides ease of access
 - Silicone treated finger tips for improved traction
 - Hook and loop wrist closure system
 - Single-layer palm
 - Rubber details for added structure

INDI YEL/BLU	XS	S	M	L	XL	2XL
3330 -	3912	3913	3914	3915	3916	3917
INDI RED/WHT	XS	S	M	L	XL	2XL
3330 -	3918	3919	3920	3921	3922	3923
COMB NVY/ORG	XS	S	M	L	XL	2XL
3330 -	3906	3907	3908	3909	3910	3911
COMB BLK/FLO	XS	S	M	L	XL	2XL
3330 -	3900	3901	3902	3903	3904	3905



INDI RED/WHITE



PALM VIEW



INDI YELLOW/BLUE



COMB NAVY/ORANGE



COMB BLACK/FLO GREEN

FLOW GLOVE /

- **COVERAGE**
Rubber and neoprene coverage in strategic areas
- **QUICK ENTRY**
Slip-on cuff provides quick entry
- **OPTIMAL AIR FLOW**
Diamond mesh Q-span, mesh finger gussets and perforated palm provide great airflow
- **ADDITIONAL FEATURES**
 - Stretch mesh flex joints on fingers enhances mobility
 - Silicone treated finger tips for improved traction
 - Wrapped thumb and gripping points for added durability

BLUE	XS	S	M	L	XL	2XL
3330 -	3067	3068	3069	3070	3071	3072
BLACK	XS	S	M	L	XL	2XL
3330 -	3061	3062	3063	3064	3065	3066
NAVY/ORG	XS	S	M	L	XL	2XL
3330 -	3073	3074	3075	3076	3077	3078
RED	XS	S	M	L	XL	2XL
3330 -	3079	3080	3081	3082	3083	3084



BLACK



NAVY/ORANGE



BLUE



PALM VIEW



RED

DEFEND GLOVE /

• MAXIMUM COVERAGE

TPR knuckles, TPR features, and layered backhand panels offer excellent coverage

• HIGH-PERFORMANCE TRACTION

Leather palm provides superb grip, durability, and handlebar control

• TOUCH SCREEN COMPATIBLE

Panels on index and middle finger tips allow easy use of mobile devices

• OPTIMAL AIR FLOW

Mesh and Airprene construction, and perforated palm keeps hands cool throughout

• ADDITIONAL FEATURES

- Notched wrist opening provides ease of access
- Stretch mesh flex joints on fingers enhances mobility
- Silicone treated finger tips for improved traction
- Hook and loop wrist closure system
- Leather "grip side" thumb wrap for added coverage

BLK/WHT	XS	S	M	L	XL	2XL
3330 -	3858	3859	3860	3861	3862	3863
CHAR/DK ORG	XS	S	M	L	XL	2XL
3330 -	3864	3865	3866	3867	3868	3869
BLACK	XS	S	M	L	XL	2XL
3330 -	4335	4336	4337	4338	4339	4340



BLACK/WHITE



PALM VIEW



CHARCOAL/DARK ORANGE



BLACK

INVERT GLOVE /

- **UNIQUE CONSTRUCTION**
Inverted seams throughout provide a comfortable, seamless feel that eliminates seam bunching at finger tips
- **LIGHTWEIGHT AND DURABLE**
4-way stretch backhand material with supple yet durable fully perforated palm
- **CUSTOM FIT**
Hook and loop closure system.
- **ADDITIONAL FEATURES**
 - Unique graphics
 - Notched wrist opening provides ease of access
 - Mesh finger gussets for breathability and added comfort
 - Silicone treated finger tips
 - Wrapped thumb and gripping points for added durability

RHYTHM YEL	XS	S	M	L	XL	2XL
3330 -	3954	3955	3956	3957	3958	3959
RHYTHM RED	XS	S	M	L	XL	2XL
3330 -	3948	3949	3950	3951	3952	3953
FLECTION WHT	XS	S	M	L	XL	2XL
3330 -	3930	3931	3932	3933	3934	3935
FLECTION BLK	XS	S	M	L	XL	2XL
3330 -	3924	3925	3926	3927	3928	3929
TRACER MULTI	XS	S	M	L	XL	2XL
3330 -	3960	3961	3962	3963	3964	3965
PIX BLUE	XS	S	M	L	XL	2XL
3330 -	3936	3937	3938	3939	3940	3941
PIX GREEN	XS	S	M	L	XL	2XL
3330 -	3942	3943	3944	3945	3946	3947



RHYTHM RED

PALM VIEW



RHYTHM YELLOW



TRACER MULTI



FLECTION WHITE



FLECTION BLACK



PIX BLUE



PIX GREEN

SPECTRUM GLOVE /

- **COVERAGE**
Rubber backhand protection and layered backhand panels offer excellent coverage
- **COMFORT GRIP**
Lightly padded palm provides a comfortable grip
- **OPTIMAL AIR FLOW**
Mesh and Airprene construction, and perforated palm keeps hands cool throughout
- **ADDITIONAL FEATURES**
 - Notched wrist opening provides ease of access
 - Silicone treated finger tips for improved traction
 - Hook and loop wrist closure system
 - Wrapped thumb and gripping points for added durability

BLACK	XS	S	M	L	XL	2XL
3330 -	3085	3086	3087	3088	3089	3090
RED	XS	S	M	L	XL	2XL
3330 -	3109	3110	3111	3112	3113	3114
BLUE	XS	S	M	L	XL	2XL
3330 -	3091	3092	3093	3094	3095	3096
GREEN	XS	S	M	L	XL	2XL
3330 -	3097	3098	3099	3100	3101	3102
NAVY/ORG	XS	S	M	L	XL	2XL
3330 -	3402	3403	3404	3405	3406	3407
WHITE	XS	S	M	L	XL	2XL
3330 -	3115	3116	3117	3118	3119	3120
ORANGE	XS	S	M	L	XL	2XL
3330 -	3103	3104	3105	3106	3107	3108
YELLOW	XS	S	M	L	XL	2XL
3330 -	3121	3122	3123	3124	3125	3126



RED

PALM VIEW



WHITE





BLACK



YELLOW



GREEN



NAVY/ORANGE



ORANGE



BLUE

VOID GLOVE /

- **LIGHTWEIGHT COMFORT**
Fitted stretch backhand panel provides lightweight comfort
- **QUICK ENTRY**
Slip-on cuff provides quick entry
- **OPTIMAL AIR FLOW**
Perforated palm keeps hands cool
- **ADDITIONAL FEATURES**
 - 4-way stretch finger gussets enhance mobility
 - Screen printed palm graphics
 - Wrapped thumb and gripping points for added durability

AKTIV RED	XS	S	M	L	XL	2XL
3330 -	3984	3985	3986	3987	3988	3989
AKTIV MULTI	XS	S	M	L	XL	2XL
3330 -	3978	3979	3980	3981	3982	3983
AKTIV CACTUS	XS	S	M	L	XL	2XL
3330 -	3972	3973	3974	3975	3976	3977
AKTIV BLK/WHT	XS	S	M	L	XL	2XL
3330 -	3966	3967	3968	3969	3970	3971
COVERT SAND	XS	S	M	L	XL	2XL
3330 -	4008	4009	4010	4011	4012	4013
COVERT MID	XS	S	M	L	XL	2XL
3330 -	4002	4003	4004	4005	4006	4007
DAZZ WHITE	XS	S	M	L	XL	2XL
3330 -	3990	3991	3992	3993	3994	3995
DAZZ MAG	XS	S	M	L	XL	2XL
3330 -	3996	3997	3998	3999	4000	4001



AKTIV MULTI



PALM VIEW



AKTIV RED



AKTIV CACTUS



AKTIV BLACK/WHITE



COVERT SAND



COVERT MIDNIGHT



DAZZ WHITE

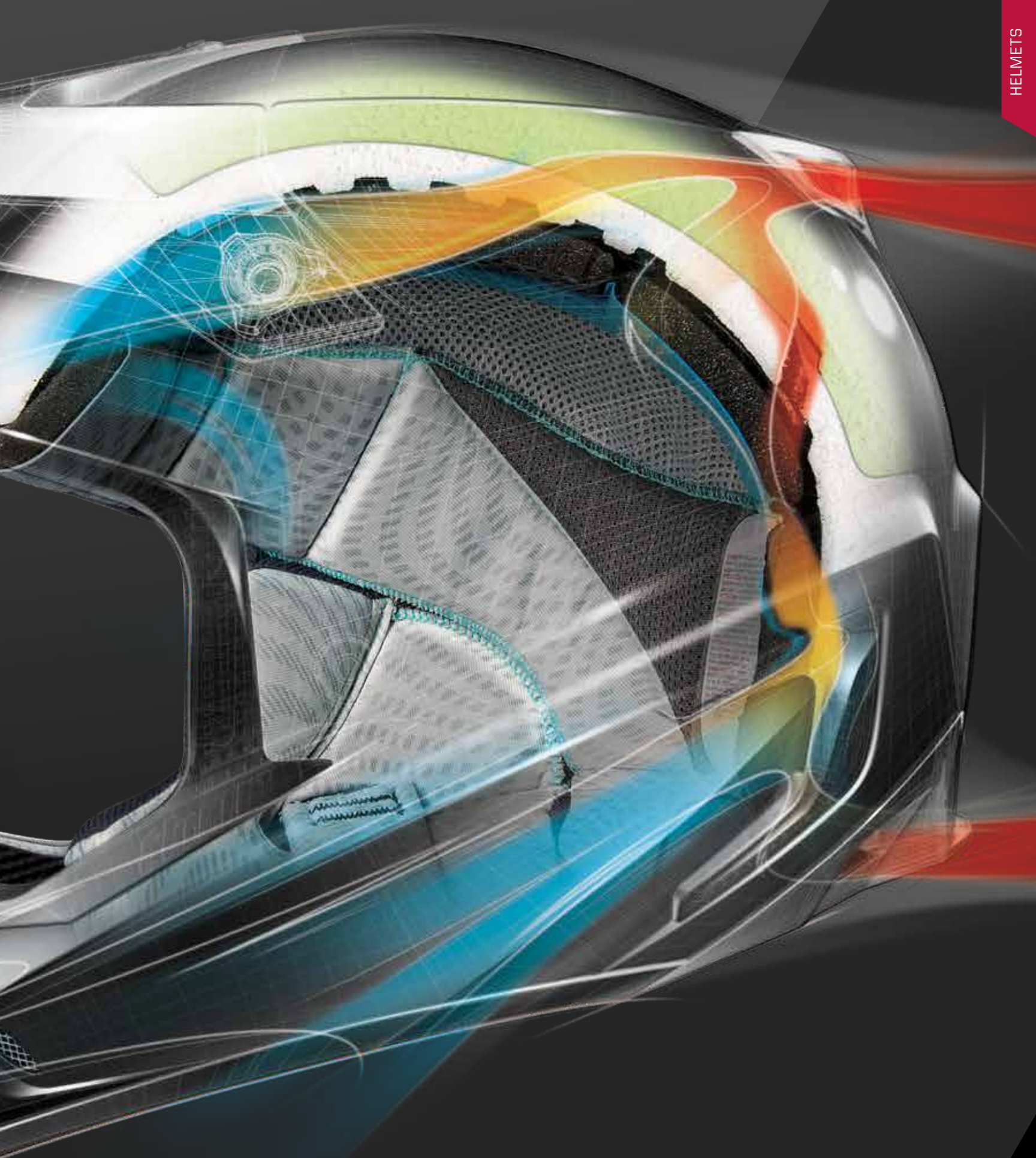


DAZZ MAGENTA



IMAGINED / DESIGNED / DEVELOPED PROVEN VERGE

When designing the VERGE, we worked hand in hand with our riders to develop a helmet that checked all the boxes. From coverage, to comfort, to ventilation, the VERGE helmet has been carefully designed to deliver first-class performance across the board. Weighing in at just 1286 grams (size Medium), the Verge is one of the lightest helmets on the market. Inside of the hand-laid composite shell is a dual density liner that provides increased energy absorption for premium coverage. With 11 strategically placed vents, the VERGE rewards you for stretching that throttle cable by circulating fresh air into the helmet, while simultaneously pushing the hot air out. Off-road or moto, the VERGE is designed to perform on all fronts, regardless of what the track or trail throws at you.



SAFETY WARNING: riding a motorcycle is a dangerous activity. When riding, always wear a helmet, eye protection and protective clothing. There is no assurance that serious injury or death can be avoided even if you wear the product shown in this catalog and take all the precautions to avoid every risk. Please ensure that your THOR products fit properly. Improperly fitting products can impair your ability to control your motorcycle.

VERGE HELMETS /

- **MAXIMUM VENTILATION**
Strategically placed air intake ports with high flow exhaust for rapid cooling throughout helmet
- **PERFORMANCE BUILT**
Hand-laid composite fiberglass construction for superior strength with minimal weight
- **CLEAN AND FRESH**
Antibacterial, moisture wicking, removable and washable Silvercool™ liner for comfort
- **ADDITIONAL FEATURES**
 - Plush interior liner wicks away sweat and helps keep you cool
 - Hi-flow mouth vent with filter to prevent roost from entering
 - Fully adjustable visor provides ample coverage
 - Front intake vents allow direct airflow to enter the helmet
 - Minimal gaskets reduce the overall helmet weight
 - Dual density EPS liner features extensive venting that aligns with shell vent ports
 - Rear exhaust vents allow hot air to escape quickly
 - Rear shell shape quickly & easily repositions the goggle strap
 - Side vents funnel cooler air into the helmet
 - Large hole mesh liner promotes airflow
 - DOT and ECE 22.05 approved

DOT / ECE
APPROVED



VERGE VORTECHS



WHITE / GRAY

HELMET	XS	S	M	L	XL	2XL
0110 -	4722	4723	4724	4725	4726	4727

VISOR KIT
0132-1006



BACK 3/4



TOP



BACK

VERGE VORTECHS



FLO ORANGE / GRAY

HELMET	XS	S	M	L	XL	2XL
0110 -	4728	4729	4730	4731	4732	4733

VISOR KIT
0132-1007



BACK 3/4



TOP



BACK



2.8 LBS. (1286 GRAMS)
SIZE MEDIUM

FLO GREEN / NAVY

HELMET	XS	S	M	L	XL	2XL
0110 -	4734	4735	4736	4737	4738	4739

VISOR KIT
0132-1008



BACK 3/4



TOP



BACK



FLO ORANGE / WHITE

HELMET	XS	S	M	L	XL	2XL
0110 -	4704	4705	4706	4707	4708	4709

VISOR KIT
0132-1003



BACK 3/4



TOP



BACK

VERGE DAZZ



MAGENTA / BLACK

HELMET	XS	S	M	L	XL	2XL
0110 -	4698	4699	4700	4701	4702	4703

VISOR KIT
0132-1002



TOP



BACK 3/4



BACK

VERGE OBJECTIV



BLACK / GRAY

HELMET	XS	S	M	L	XL	2XL
0110 -	4716	4717	4718	4719	4720	4721

VISOR KIT
0132-1005



TOP



BACK 3/4



BACK

VERGE REBOUND /



FLO ORANGE / BLACK

HELMET	XS	S	M	L	XL	2XL
0110 -	4290	4291	4292	4293	4294	4295

VISOR KIT
0132-0915



TOP



BACK 3/4



BACK



FLO GREEN / BLACK

HELMET	XS	S	M	L	XL	2XL
0110 -	4284	4285	4286	4287	4288	4289

VISOR KIT
0132-0914



TOP



BACK 3/4



BACK



MATTE BLACK

HELMET	XS	S	M	L	XL	2XL
0110 -	3344	3345	3346	3347	3348	3349

VISOR KIT
0132-0733



TOP



BACK 3/4



BACK



WHITE

HELMET	XS	S	M	L	XL	2XL
0110 -	3350	3351	3352	3353	3354	3355

VISOR KIT
0132-0734



TOP



BACK 3/4



BACK

ENHANCE YOUR RIDE
GOGGLES





SAFETY WARNING: riding a motorcycle is a dangerous activity. When riding, always wear a helmet, eye protection and protective clothing. There is no assurance that serious injury or death can be avoided even if you wear the product shown in this catalog and take all the precautions to avoid every risk. Please ensure that your THOR products fit properly. Improperly fitting products can impair your ability to control your motorcycle.

SNIPER GOGGLE /

- Injection molded brow component maintains frame contour
- Innovative frame with maximum airflow vents
- Drilled frame ports for increased ventilation and fog resistance
- Anti-fog, scratch resistant lens with UV protection
- Optically correct polycarbonate lens for clear vision
- Clear spare lens included. Replacement lenses available
- Triple post tear-off system ready. Replacement tear-offs available
- Removable roost nose guard cover
- Dual layer 14mm face foam with soft micro fleece liner
- Adjustable woven strap with silicone grip for secure fit
- Unique flush mounted strap covers for added retention
- Plush goggle bag included for safe storage
- Supports Total Vision System. Sold separately
- Tested and certified according to European Standard EN 1938:2010



BARRED WHITE/BLACK
2601-1932



GEO NAVY/ORANGE
2601-1939



BARRED RED/WHITE
2601-1934



CARBON WHITE/BLACK
2601-1941



BARRED BLUE/WHITE
2601-1933

TOTAL VISION SYSTEM /

- **MAXIMUM VISION**
Roll off system provides immediate clarity when things get dirty
- **VERSATILE FIT**
Designed for use on Sniper, Conquer and Combat Goggle systems
- **ADDITIONAL FEATURES**
 - Replaceable flap that diverts mud and moisture
 - Clear film canisters for quick viewing of remaining quantity
 - Anti-fog, scratch resistant lens with UV protection
 - Optically correct polycarbonate lens for clear vision



GEO YELLOW/BLACK
2601-1938



TOTAL VISION SYSTEM
(CLEAR) 2602-0719



REPLACEMENT LENS
2602-0721



AMMO 6 PACK
2602-0329



MUD FLAPS 5 PACK
2602-0720



CHASE LIME/WHITE
2601-1936



CHASE ORANGE/WHITE
2601-1937



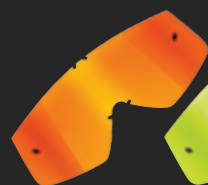
CHASE BLACK/RED
2601-1935



WARSHIP CHARCOAL/ORANGE
2601-1942



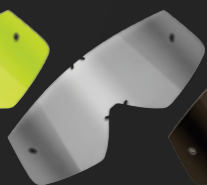
WARSHIP SAND/BLACK
2601-1940



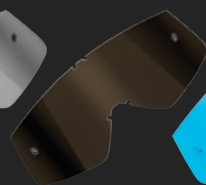
IRIDIUM
2602-0595



MIRROR/LIME
2602-0594



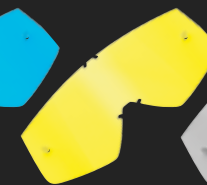
MIRRORED
2602-0593



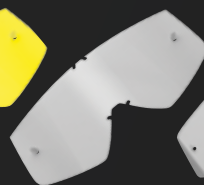
SMOKE
2602-0592



BLUE
2602-0590



YELLOW
2602-0591



CLEAR
2602-0589



TEAR OFF CLEAR
(10PK) 2602-0598



TEAR OFF LAMINATED
(14PK) 2602-0599

CONQUER GOGGLE /

- Innovative frame with maximum airflow vents
- Drilled frame ports for increased ventilation and fog resistance
- Anti-fog, scratch resistant lens with UV protection
- Optically correct polycarbonate lens for clear vision
- Clear lens mounted. Replacement lenses available
- Dual post tear-off system ready. Replacement tear-offs available
- Dual layer 14mm face foam with soft micro fleece liner
- Adjustable woven strap with silicone grip for secure fit
- Plush goggle bag included for safe storage
- Supports Total Vision System. Sold separately
- Tested and certified according to European Standard EN 1938:2010



FLO PINK/BLACK
2601-2091



FLO GREEN/BLACK
2601-2089



FLO ORANGE/BLACK
2601-2090



GUNMETAL/GREEN
2601-1929



YELLOW/BLACK
2601-1931



STEEL/BLACK
2601-1930



BLACK/WHITE
2601-1924



BLUE/WHITE
2601-1928



RED/WHITE
2601-1927



PINK/WHITE
2601-1926

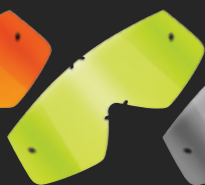


ORANGE/NAVY
2601-1925

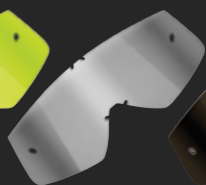
BARON GOGGLE BAG /
BLACK/RED ORANGE
3512-0191 - (SEE PG.106)



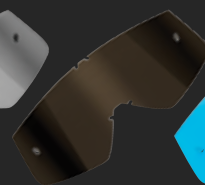
IRIDIUM
2602-0595



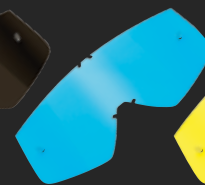
MIRROR/LIME
2602-0594



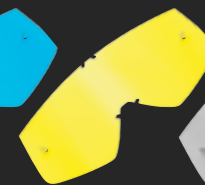
MIRRORED
2602-0593



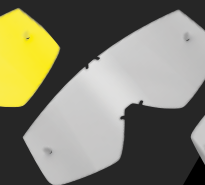
SMOKE
2602-0592



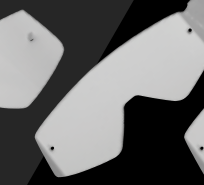
BLUE
2602-0590



YELLOW
2602-0591



CLEAR
2602-0589



TEAR OFF CLEAR
(10PK) 2902-0612



TEAR OFF LAMINATED
(14PK) 2602-0613

ENEMY PRINTED & FLUORESCENT GOGGLES

- Innovative frame with aperture vent for maximum airflow
- Drilled frame ports for increased ventilation and fog resistance
- Anti-fog, scratch resistant lens with UV protection
- Optically correct polycarbonate lens for clear vision
- Clear lens included, replacement lenses available
- Dual post tear-off system ready. Tear-off packs available
- Single layer 12mm face foam for secure seal
- Adjustable woven strap with silicone grip for secure fit
- Plush goggle bag included for safe storage
- Tested and certified according to European Standard EN 1938:2010



FLO GREEN/BLACK
2601-1734



FLO ORANGE/BLACK
2601-1735



SPLATTER/BLACK
2601-1469



WEB/WHITE
2601-1470



TREAD/RED
2601-1731



TREAD/YELLOW
2601-1732



SPLATTER/GREEN
2601-1733

ENEMY SOLID GOGGLES



BLUE/WHITE
2601-0711



WHITE/BLACK
2601-0708



BLACK/WHITE
2601-0709



RED/BLACK
2601-0710



YELLOW/BLACK
2601-0714



PINK/BLACK
2601-0712

ENEMY SAND GOGGLES

- Sand resistant high density foam to prevent fine particles
- Innovative frame with aperture vent for maximum airflow
- Drilled frame ports for increased ventilation and fog resistance
- Anti-fog, scratch resistant lens with UV protection
- Optically correct polycarbonate lens for clear vision
- Smoke lens mounted. Replacement lenses available
- Dual post tear-off system ready. Tear-off packs available
- Single layer 12mm face foam for secure seal
- Adjustable woven strap with silicone grip for secure fit
- Plush goggle bag included for safe storage
- Tested and certified according to European Standard EN 1938:2010



FLO ORANGE/BLACK
2601-1895



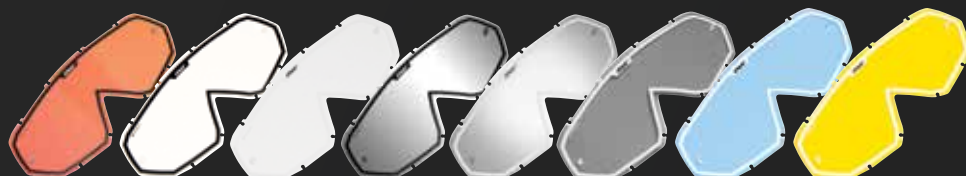
RED/BLACK
2601-1896



BLACK/WHITE
2601-1467



WHITE/BLACK
2601-1468



IRIDIUM
2602-0555

CLEAR/BLACK
2602-0143

CLEAR/WHITE
2602-0150

MIRROR/BLK
2602-0145

MIRROR/WHT
2602-0152

SMOKE/WHT
2602-0144

BLUE/WHT
2602-0178

YELLOW/WHT
2602-0179



TEAR OFF CLEAR
(10PK) 2602-0148

TEAR OFF LAMINATED
(14PK) 2602-0658

ARMOR UP AND GET SOME COVERAGE



COOPER / WEBB



SAFETY WARNING: riding a motorcycle is a dangerous activity. When riding, always wear a helmet, eye protection and protective clothing. There is no assurance that serious injury or death can be avoided even if you wear the product shown in this catalog and take all the precautions to avoid every risk. Please ensure that your THOR products fit properly. Improperly fitting products can impair your ability to control your motorcycle.

SENTINEL GP PROTECTOR

- **LIGHTWEIGHT PROTECTION**
Stone shield constructed with energy dispersing molded panels /
Level 1 back protector constructed to reduce impact energy transmission
- **SUPPORT**
Adjustable elastic torso strap with ratcheting buckle closure
- **ADDITIONAL FEATURES**
 - Strategically placed ventilation ports for maximum cooling
 - Soft chassis liner molded for maximum comfort
 - Supports Back Strap Kit and ID Panel, sold separately (M/L only)
 - Stone shield tested and certified according to European Standard EN 14021:2003
 - Back protector tested and certified according to European Standard EN 1621-2:2014
 - 3 Sizes Available Adult M/L, Adult XL/2XL, and Youth S/M *See Page 120

BLK/FLO ORG	M/L	XL/2XL
2701-	0754	0755
BLK/FLO GRN	M/L	XL/2XL
2701-	0756	0757
BLK/BLU	M/L	XL/2XL
2701-	0750	0751
BLK/RED	M/L	XL/2XL
2701-	0752	0753
BLK/WHT	M/L	XL/2XL
2701	0746	0747
WHT/BLK	M/L	XL/2XL
2701-	0748	0749



BACK VIEW



BLACK/FLO ORANGE



BACK STRAP KIT - BLACK/CLEAR
2701-0679



ID PANEL - CLEAR
2701-0680



BLACK/FLO GREEN



BLACK/BLUE



BLACK/RED

SENTINEL PROTECTOR/

· LIGHTWEIGHT PROTECTION

Stone shield constructed with energy dispersing molded panels

· SUPPORT

Adjustable elastic torso strap with ratcheting buckle closure

· ADDITIONAL FEATURES

- Strategically placed ventilation ports for maximum cooling
- Soft chassis liner molded for maximum comfort
- Supports ID Panel. Sold separately
- Tested and certified according to European Standard EN 14021:2003
- Available in Youth S/M *See Page 121



ID PANEL - CLEAR
2701-0415



BLACK
2701-0780



WHITE/BLACK
2701-0781



BLACK/WHITE



WHITE/BLACK



GUARDIAN PROTECTOR

- **UNIQUE CONSTRUCTION**
Pressure fit molded comfort liner system provides a smooth inner chassis for maximum comfort
- **SUPPORT**
Adjustable waist buckle closure system

- ADDITIONAL FEATURES**
- Level 1 back protector constructed to reduce impact energy transmission
 - Stone shield constructed with energy dispersing molded panels
 - Strategically placed ventilation ports for maximum cooling
 - Refined fit for maximum deflector coverage
 - Adjustable suspension shoulder guards with molded comfort liner
 - Adjustable and removable biceps arm guards with molded comfort liner
 - Stone shield tested and certified according to European Standard EN 14021:2003
 - Back protector tested and certified according to European Standard EN 1621-2:2014
 - Available in Youth *See Page 121

BLK/RED	M/L	XL/2XL
2701-	0791	0792
BLK/BLU	M/L	XL/2XL
2701-	0795	0796
BLK/ORG	M/L	XL/2XL
2701-	0793	0794
BLK/SIL	M/L	XL/2XL
2701-	0789	0790
WHT/BLK	M/L	XL/2XL
2701-	0787	0788



BACK VIEW

BLACK/RED



BLACK/BLUE



BLACK/ORANGE



BLACK/SILVER



WHITE/BLACK





SENTRY XP /

- Level 1 back, shoulder and elbow protectors constructed to reduce impact energy transmission
- Lightly padded collar for comfort
- Reinforced and articulated back panels
- Perforated padded panels for increased ventilation and comfort
- Micro-mesh chassis with external seams for maximum comfort
- Adjustable chest and shoulder straps for secure fit
- Dual elastic forearm closures straps for secure elbow fitment
- Adjustable elbow flex joint for increased mobility
- Strategically placed tension straps for secure fit
- Locking YKK® zippers for secure fit
- Removable ventilated waist belt is adjustable for desired comfort
- Waist belt coated with silicone grip tape for secure fit
- Tested and certified according to European Standard EN 14021:2003, EN 1621-1:2012 and EN 1621-2:2014

BLACK S/M L/XL 2XL/3XL
2701 0737 0738 0739



BACK VIEW

SENTRY RIDGE /

- Level 1 back protector constructed to reduce impact energy transmission
- Lightly padded collar for comfort
- Reinforced and articulated back panels
- Sleeveless micro-mesh chassis with external seams for comfort
- Locking YKK® zippers for secure fit
- Removable ventilated waist belt is adjustable for desired comfort
- Waist belt coated with silicone grip tape for secure fit
- Lightweight minimalist chassis design
- Tested and certified according to European Standard EN 1621-2:2014

BLACK	S/M	L/XL	2XL/3XL
2701	0740	0741	0742



BACK VIEW



SENTRY ELBOW GUARD /

- Level 1 elbow protector constructed to reduce impact energy transmission
- Injection molded coverage for elbow and forearm
- 4-way stretch foam chassis for added comfort
- Ventilated panels for increased cooling
- Elastic forearm retention strap for secure fitment
- Tested and certified according to European Standard EN 1621-1:2012

BLACK	S/M	L/XL
2706	0174	0175



SENTRY VEST /

- Level 1 back protector constructed to reduce impact energy transmission
- Lightly padded collar for comfort
- Reinforced and articulated back panels
- Ventilated chest panel
- Sleeveless micro-mesh chassis with external seams for comfort
- Perforated padded panels for increased ventilation and comfort
- Strategically placed tension straps for secure fit
- Locking YKK® zippers for secure fit
- Removable ventilated waist belt is adjustable for desired comfort
- Waist belt coated with silicone grip tape for secure fit
- Tested and certified according to European Standard EN 14021:2003 and EN 1621-2:2014

BLACK	S/M	L/XL	2XL/3XL
2701	0743	0744	0745



BACK VIEW

FORCE XP KNEEGUARD

• COMFORT & COOLING

Perforated airprene chassis for support and secure fit

• ANATOMICAL KNEE ACTION

Impact resistant, polyethylene kneecap with dual pivot system mimics anatomical action of the knee

• ADDITIONAL FEATURES

- Level 1 knee protector constructed to reduce impact energy transmission
- Inverted post latching system.
- Adjustable hook and loop closure strap.
- Asymmetrical design for comfort and fit
- Tested and certified according to European Standard EN 1621-1:2012
- Sold in pairs
- Available in Youth *See Page 124

BLACK	S/M	L/XL	2XL/3XL
2704	0359	0360	0361

RED	S/M	L/XL	2XL/3XL
2704	0362	0363	0364



RED

BLACK

STATIC KNEEGUARD /

- Comfortably fits under riding gear
- Secure and adjustable hook and loop closure
- Airprene material promotes airflow
- Injection molded knee and shin coverage

BLACK
2704-0129



STATIC ELBOW GUARD /

- Stitched-in foam elbow donut for comfort
- Lightweight and flexible
- Fits comfortably under riding gear
- Perforated Airprene material promotes airflow

BLACK **S/M** **L/XL**
2706 0079 0080



QUADRANT KNEEGUARD /

- 2-piece molded knee/shin panels
- Stitched-in foam patella donut for comfort
- Asymmetrical design for a specific fit
- Dual integrated elastic straps for a secure fit
- Available in Youth *See Page 125

BLACK
2704-0240



QUADRANT ELBOW GUARD /

- Adjustable closure system
- Moisture wicking interior panel reduces chafing
- Stitched-in foam elbow donut for comfort
- Extensive vent channels for airflow
- Available in Youth *See Page 125

BLACK
2706-0137





COOPER / WEBB

SECTOR GP KNEEGUARD /

- Level 1 knee protector constructed to reduce impact energy transmission
- Durable polypropylene molded knee and shin panels
- Two adjustable retention straps reduce repositioning while riding
- Slim, compact design increases comfort while keeping the weight to a minimum
- Tested and certified according to European Standard EN 1621-1:2012
- Available in Youth *See Page 125

CHARCOAL/YELLOW
2704-0429



SECTOR KNEEGUARD /

- Durable polypropylene molded knee and shin panels
- Two adjustable retention straps for secure fit
- Slim, compact design increases comfort while keeping the weight to a minimum
- Available in Youth *See Page 125

BLACK
2704-0082



FORCE BELT

• UNRESTRICTED COVERAGE

Articulated TPR panels, multi-layered construction, and adjustability provide support where needed while allowing optimal mobility

• MAXIMUM AIR FLOW

Perforated biofoam and airprene chassis optimizes ventilation and keeps body cool

• CUSTOM FIT

Dual-pull elastic support straps and hook and loop belt to accommodate each rider's unique build

• ADDITIONAL FEATURES

- Kidney support for the lower back and posture
- Ergonomic design contours around body
- Perforated hook and loop belt
- Moisture-wicking interior with padding

• SIZES AVAILABLE

S/M 28-36in. & L/XL 36-44in.

BLK/RED/WHT	S/M	L/XL
2703-	0137	0138

BLK/GRY/WHT	S/M	L/XL
2703-	0135	0136



BLACK / WHITE / RED



BLACK / GRAY / WHITE

CLINCH BELT

• ADJUSTABLE

Adjustable elastic straps with hook and loop retention system provides a secure fit

• LIGHTWEIGHT AND DURABLE

Lightweight, durable mesh construction

• SUPPORT

Vertical inserts for added support

• ADDITIONAL FEATURES

- Kidney support for the lower back and posture
- Dual pull hook and loop adjustment system
- Ergonomic design provides support and mobility
- Slim low profile TPRs for added support
- Perforated and vented throughout

• SIZES AVAILABLE

S/M 28-36in. & L/XL 36-44in.
Available in Youth *See Page 124

BLK/YEL	S/M	L/XL
2703-	0131	0132

BLK/WHT	S/M	L/XL
2703-	0129	0130



BLACK / YELLOW



BLACK / WHITE

COMP PANT /

- Full length compression pant
- Moisture wicking chassis
- Flat stitched to reduce irritation

BLACK	S	M	L	XL	2XL
2940-	0246	0247	0248	0249	0250
NAVY/ORG	S	M	L	XL	2XL
2940-	0282	0283	0284	0285	0286



BLACK



NAVY / ORANGE

COMP SHORT SE /

- Molded EVA hip padding
- Tricot wrapped foam crotch pad
- Form fitting for a no-bind fit
- Elastic waistband keeps roost and sand out
- Tested according to the basic requirements of Directive 89/686/EEC, Category I

BLACK	S	M	L	XL	2XL
2940	0230	0231	0232	0233	0234



COMP KNEE SLEEVES /

- Reduces abrasion associated with knee guards
- Moisture wicking chassis
- Anti-slip silicone backing under the top band
- Sold as a pair

BLACK	S/M	L/XL	2XL/3XL
2704-	0340	0341	0342
NAVY/ORG	S/M	L/XL	2XL/3XL
2704-	0401	0402	0403



BLACK



NAVY / ORANGE

COMP SHORT /

- Elastic Waistband keeps roost and sand out
- Form Fitting for a no-bind fit
- Nylon/Spandex chassis construction

BLACK	S	M	L	XL	2XL
2940	0277	0278	0279	0280	0281



COMP FLEX DEFLECTOR

- Thin, molded biofoam chest panel to block roost
- Sleeveless construction
- Mesh construction for ventilation
- Tight fitting base layer
- Tested according to the basic requirements of Directive 89/686/EEC, Category I

GRAY	S/M	L/XL
2701	0685	0686



BACK VIEW



COMP DEFLECTOR

- Molded biofoam chest panel to block roost
- Sleeveless construction
- Ride-lite moisture wicking chassis
- Mesh construction for ventilation
- Form fitting for a no-bind fit
- Tested according to the basic requirements of Directive 89/686/EEC, Category I

BLACK	S/M	L/XL
2701	0634	0635



BACK VIEW



COMP SHIRT

- Mesh construction for ventilation
- Form fitting for a no-bind fit
- Flat stitched to reduce irritation

BLACK	S/M	L/XL
2940	0240	0241



BACK VIEW



COMP SOCK

- **COMFORT FIT**
Snug compression areas from top to bottom for both support and comfort
- **MOISTURE WICKING**
A mixed fiber construction allows your feet to stay dry and cool
- **SUPPORT**
Reinforced elastic arch panels
- **ADDITIONAL FEATURES**
 - Full-length knee brace sock
 - Stretch mesh construction for a cool, comfortable fit
 - Deep heel pocket
 - No-fade sublimated graphics

BLACK	S/M	L/XL
3431-	0259	0260
NAVY/ORG	S/M	L/XL
3431-	0261	0262



BLACK

NAVY/ORANGE

MOTO SUB SOCK

- **COMFORT FIT**
Snug compression areas from top to bottom for both support and comfort
- **MOISTURE WICKING**
A mixed fiber construction allows your feet to stay dry and cool
- **SUPPORT**
Reinforced elastic arch panels
- **ADDITIONAL FEATURES**
 - Padded toe and heel panels
 - Secure fit cuff
 - Deep heel pocket
 - Woven tag loop at cuff
 - Sublimated custom graphics

LIME	6-9	10-13	14-15
3431-	0336	0337	0338
RED	6-9	10-13	14-15
3431-	0339	0340	0341



LIME

RED

MOTO KNIT SOCK

- **COMFORT FIT**
Snug compression areas from top to bottom for both support and comfort
- **MOISTURE WICKING**
A mixed fiber construction allows your feet to stay dry and cool
- **SUPPORT**
Reinforced elastic arch panels
- **ADDITIONAL FEATURES**
 - Padded toe and heel panels
 - Secure fit cuff
 - Deep heel pocket
 - Woven tag loop at cuff
 - Knit custom graphics

AKTIV	6-9	10-13	14-15
3431-	0330	0331	0332
DAZZ	6-9	10-13	14-15
3431-	0333	0334	0335



AKTIV

DAZZ

MX COOL SOCK /

• COMFORT FIT

Lightweight yet durable material provides a more controlled feel

• MOISTURE WICKING

Constructed of Cool Max®, a special material that will keep your foot cooler and dryer longer

GRY/ORG 6-9 10-13
3431 - 0275 0276

CHR/RED 6-9 10-13
3431 - 0277 0278

BLU/GRN 6-9 10-13
3431 - 0271 0272

GRN/ORG 6-9 10-13
3431 - 0273 0274



GRAY/ORANGE



CHARCOAL/RED



BLUE/GREEN



GREEN/ORANGE

MX SOCK /

• COMFORT FIT

Thick traditional MX sock construction for moisture control

• FLEXIBILITY

Ribbed panels in the cuff, ankle and instep for added comfort

• COVERAGE

Over-the-calf socks are ideal for riders who wear knee braces to prevent chafing

BLK/RED 6-9 10-13
3431 - 0265 0266

BLK/CYN 6-9 10-13
3431 - 0263 0264

CHR/ORG 6-9 10-13
3431 - 0267 0268

GRN/YEL 6-9 10-13
3431 - 0269 0270



BLACK/RED



BLACK/CYAN



CHARCOAL/ORANGE



GREEN/YELLOW

DUAL SPORT SOCK /

• COMFORT FIT

Intended to be used with boots or shoes with a lower height compared to a traditional MX boot

• MOISTURE WICKING

Constructed of Cool Max®, a special material that will keep your foot cooler and dryer longer

GRY/ORG 6-9 10-13
3431 - 0283 0284

CHR/RED 6-9 10-13
3431 - 0285 0286

BLU/GRN 6-9 10-13
3431 - 0279 0280

GRN/ORG 6-9 10-13
3431 - 0281 0282



GRAY/ORANGE



CHARCOAL/RED



BLUE/GREEN



GREEN/ORANGE

BLITZ BOOTS /

- Pre-curved injection molded shin plate
- 3 fully adjustable straps allow for a custom fit
- Fully synthetic heat shield
- Injection molded medial abrasion plate
- Mesh liner promotes airflow
- Metal toe cap reinforces the outsole strength
- Uni-directional outsole with a steel shank
- Injection molded positive lock buckles
- ATV outsole only offered in black
- Tested and certified according to European Standard EN 13634:2010

RED/BLU	7	8	9	10	11	12	13	14	15
3410-	1469	1470	1471	1472	1473	1474	1475	1476	1477
BLK/RED	7	8	9	10	11	12	13	14	15
3410-	1460	1461	1462	1463	1464	1465	1466	1467	1468
BLK/GRN	7	8	9	10	11	12	13	14	15
3410-	1442	1443	1444	1445	1446	1447	1448	1449	1450
WHT/ORG	7	8	9	10	11	12	13	14	15
3410-	1451	1452	1453	1454	1455	1456	1457	1458	1459
WHITE	7	8	9	10	11	12	13	14	15
3410-	1057	1058	1059	1060	1061	1062	1063	1064	1065
BLACK	7	8	9	10	11	12	13	14	15
3410-	1048	1049	1050	1051	1052	1053	1054	1055	1056
BLACK ATV	7	8	9	10	11	12	13	14	15
3410-	1066	1067	1068	1069	1070	1071	1072	1073	1074



MX SOLE



ATV SOLE

BLACK/RED



BLACK/GREEN



RED/BLUE



WHITE/ORANGE



WHITE



BLACK



BLACK ATV

RATCHET BOOTS

- Ratchet closure buckle system for a custom secure fit
- Synthetic leather chassis construction
- Split-grain leather heat shield
- Molded comfort interior and insole
- Welted rubber out sole with steel shank insert
- Tested and certified according to European Standard EN 13634:2010

BLACK	7	8	9	10	11	12	13	14	15
3410-	0737	0738	0739	0740	0741	0742	0743	0744	0745
WHITE	7	8	9	10	11	12	13	14	15
3410-	0746	0747	0748	0749	0750	0751	0752	0753	0754



BLACK



WHITE

BLITZ LS BOOTS

- Lightweight injection molded out sole
- Injection molded medial abrasion plate with integrated shift protection
- Contoured gaiter for increased mobility and comfort
- Adjustable positive-lock plastic buckles
- Integrated toe shift panel
- Steel shank insert for foot peg support
- Genuine split grain leather chassis construction
- Padded mesh interior promotes ventilation
- Tested and certified according to European Standard EN 13634:2010

BLACK	7	8	9	10	11	12	13	14	15
3410-	1207	1208	1209	1210	1211	1212	1213	1214	1215
WHITE	7	8	9	10	11	12	13	14	15
3410-	1216	1217	1218	1219	1220	1221	1222	1223	1224



BLACK



WHITE



ZIP-UP, ROLL OUT
**BAGS &
ACCESSORIES**

TRANSIT WHEELIE BAG

- Polypropylene molded base for remarkable strength and durability
- Retractable push button handle for ease of movement
- Oversized smooth rolling wheels coupled with increased ground clearance
- Varying pocket sizes accommodate large and small items easily
- Detachable main storage compartment divider permits large odd shaped items
- Designed to accommodate helmets, boots and protective gear
- Reinforced wheel housing
- 600D Polyester Shell, 210D Polyester Lining and PVC Base
- Dimensions: 30"L x 16"W x 16"H

BLACK/RED ORANGE
3512-0186



RIGID BASE



BLACK/RED ORANGE

CIRCUIT BAG /

- 3 large main compartments can be combined to form 1 large compartment
- Large mesh ventilation promotes airflow and helps reduce odor
- Adjustable padded shoulder strap and comfortable side, front and rear handles
- 600D Polyester Shell, 210D Polyester Lining and PVC Base
- Dimensions: 27"L x 14"W x 16"H

BLACK/RED ORANGE
3512-0187



BLACK/RED ORANGE

EQUIP BAG /

- Oversized main compartment with separate boot compartment
- Ventilation panel promotes airflow
- Small, zippered compartment helps keep accessory items separate and easy to find
- Heavy-duty shoulder strap
- 600D Polyester Shell,
- 210D Polyester Lining and PVC Base
- Dimensions: 25"L x 18"W x 18"H

BLACK/RED ORANGE
3512-0190



BLACK/RED ORANGE



RESERVOIR PACK /

- Large outer compartments hold personal items for those longer rides
- 3 liter BPA-free bladder capacity with an easy clean, big bore top
- Neoprene sleeve prevents drinking tube from kinking
- Easy access tool compartment and spare tube pocket
- Air-mesh padded shoulder straps and adjustable web belt with quick release buckle
- Elastic sleeve securely holds tools in place while riding
- Self-sealing bite valve closes after each drink to eliminate drips
- 600D Polyester Shell, 210D Polyester Lining and PVC Base

BLACK/RED ORANGE
3519-0035

STEEL/FLO GREEN
3519-0037



STEEL/FLO GREEN



BLACK/RED ORANGE



3L BPA-FREE
REPLACEMENT BLADDER
3519-0040



BPA-FREE
REPLACEMENT BITE VALVE
3519-0038

3L

HYDRANT PACK

- Special clamshell main body opens for extra storage
- Larger outer compartments hold personal items for those longer rides
- 3 liter BPA-free bladder capacity with an easy clean, big bore top
- Designed for riders that want the most water capacity
- Easy access tool compartments
- Neoprene sleeve prevents drinking tube from kinking
- Self-sealing bite valve closes after each drink to eliminate drips
- 600D Polyester Shell, 210D Polyester Lining and PVC Base

CEMENT/RED ORANGE
3519-0033

BLACK/RED ORANGE
3519-0032

STEEL/FLO GREEN
3519-0034



CEMENT/RED ORANGE



BLACK/RED ORANGE



STEEL/FLO GREEN



3L BPA-FREE
REPLACEMENT BLADDER
3519-0040



BPA-FREE
REPLACEMENT BITE VALVE
3519-0038

2L

VAPOR PACK

- Additional accessory pocket to store personal items on longer rides
- 2 liter BPA-free bladder capacity with easy clean big bore top
- Neoprene sleeve prevents drinking tube from kinking
- Slim profile is designed to be unobtrusive
- Self-sealing bite valve closes after each drink to eliminate drips
- 600D Polyester Shell, 210D Polyester Lining and PVC Base

CEMENT/RED ORANGE
3519-0030

BLACK/RED ORANGE
3519-0029

STEEL/FLO GREEN
3519-0031



CEMENT/RED ORANGE



BLACK/RED ORANGE



STEEL/FLO GREEN



2L BPA-FREE
REPLACEMENT BLADDER
3519-0039



BPA-FREE
REPLACEMENT BITE VALVE
3519-0038

BARON GOGGLE BAG /

- Easily holds eight goggles in adjustable fleece lined pockets
- Additional pockets hold extra tear-offs, rolls of film and other items
- Double stitched durable handle
- Expandable design adapts to fit all goggle shapes and sizes
- 600D Polyester Shell, Nylon and Polyester Lining with PVC Base

BLACK/RED ORANGE
3512-0191



BLACK/RED ORANGE

RIVAL HELMET BAG /

- Micro-fleece liner with inner zipper flap protects your helmet from being scratched during transit
- Side pocket holds accessories
- Ventilation holes promote airflow and decrease odor
- Durable reinforced handles makes transport easy
- 600D Polyester Shell and Nylon Liner

BLACK/RED ORANGE
3514-0028



BLACK/RED ORANGE

TECH VAULT PACK /

- Numerous tool slots and compartments securely hold all your riding essentials
- Weight is evenly distributed across the waist
- Heavy-duty adjustable web belt for maximum riding comfort
- Easy access map pouch and side pockets
- 600D Polyester Shell and 210D Polyester Lining

BLACK/RED ORANGE
3510-0072



BLACK/RED ORANGE



* TOOLS NOT INCLUDED

TECH BACKPACK

- Large main compartment and 3 exterior pockets
- Foam padded interior compartment for laptop/tablet
- Raised air-mesh back pads keep you cool
- Padded air-mesh shoulder straps for comfort
- Adjustable sternum strap for extra support
- 600D Polyester Shell, 210D Polyester Lining and PVC Base

BLACK/RED ORANGE
3517-0375



BLACK/RED ORANGE

SLAM BACKPACK

- Large main compartment
- Inner hanging zip pocket
- Laptop/Tablet compartment
- Two exterior mesh pockets
- Padded shoulder straps
- 600D Polyester Shell and 210D Polyester Lining

RED/NAVY
3517-0373

GREEN/BLUE
3517-0374

BLACK/RED
3517-0371

BLACK/WHITE
3517-0372



BLACK/RED



BLACK/WHITE



RED/NAVY



GREEN/BLUE

JERSEY ID KIT /

- Get the factory look on your jersey with our Jersey I.D kit. Iron-on transfer letters and numbers in black, white and gray to show on any color
- LETTERS:
6 Each of: A - 5 Each of: E, I, O, U, C
4 Each of: F, B, M, R, S - 3 Each of: D, F, G, N, T
2 Each of: H, J-L, P, Q, V-Z
- NUMBERS:
4 Each of: 1, 2 - 3 Each of: 3 - 2 Each of: 4-9, 0
- ASSORTED THOR LOGOS

BLACK/WHITE
4302-1275



TRACK CANOPY /

- Stay cool track-side with the 10' x 10' collapsible canopy.
- Quick release folding frame, makes for fast and easy set up and take down

BLACK/YELLOW
4030-0026



REPLACEMENT CANOPY
4030-0027

LANYARD /

- This unobtrusive lanyard with metal fastening hook and sublimated nylon leash will show your all-access pass with style

BLACK/YELLOW
9501-0148



UMBRELLA /

- Rain or shine, our umbrella opens to a full 60" diameter to keep you covered and protected from the elements
- Automatic push button 30" graphite shaft for quick action

BLACK/YELLOW
9501-0147



WINDSHIELD DIE-CUT DECAL /

- 30" Die-Cut vinyl decal

WHITE/GRAY
4320-0779



VAN/TRAILER DIE-CUT DECAL /

- 36" Die-Cut vinyl decal

BLACK/WHITE
4320-0676



CORPO DECAL SHEET /

9.5" X 13"
4320-1444



STACKED METALLIC DIE-CUT 3 PACK 3" /

3 PACK
4320-1575



STACKED FLO DIE-CUT 3 PACK 3" /

3 PACK
4320-1574



HERITAGE DECAL SHEET /

9.5" X 13"
4320-1572



SLANT DIE-CUT 6 PACK /

SLANT 9"
4320-0674

SLANT 5"
4320-0672



TALON / HAWKINS

110

THE NEXT GENERATION YOUTH



YOUTH FUSE AIR DAZZ /

JERSEY

- **MAXIMUM VENTILATION**
Fully vented mesh panels maximize air flow throughout body and keeps you cool
- **PERFORMANCE BUILT**
Raglan sleeves offer optimal mobility in arms and shoulders while the rolled cuffs and collars minimize chafing
- **MOISTURE WICKING**
100% polyester jersey material wicks away sweat and helps keep you cool
- **ADDITIONAL FEATURES**
 - No-fade sublimated graphics
 - Rib knit on collar for proper expansion
 - Drop tail design to keep jersey tucked into pant
 - Heat transfer neck label

PANT

- **MAXIMUM VENTILATION**
Fully perforated vented panels maximizes air flow throughout and keeps you cool
- **PERFORMANCE COVERAGE**
Abrasion-tolerant materials, durable construction, and full grain leather knee panels provide coverage in crucial areas
- **SPECIALIZED FIT**
Adjustable side cinches, snap buttons, and ratchet-style closure tailors to the unique build of every rider
- **DURABLE CONSTRUCTION**
Polyester and nylon are combined with double and triple stitching for a pant that is made to last
- **RACE-READY POSITIONING**
Pre-curved profile shape naturally fits with rider sitting positions
- **ADDITIONAL FEATURES**
 - Small expansion stretch panels on waist
 - Purpose built TPR features
 - Performance mesh liner



FLO ORANGE / WHITE

JERSEY	S	M	L	XL
2912-	1372	1373	1374	1375
PANT	22	24	26	28
2903-	1399	1400	1401	1402

MAGENTA / YELLOW

JERSEY	S	M	L	XL
2912-	1376	1377	1378	1379
PANT	22	24	26	28
2903-	1403	1404	1405	1406

YOUTH FUSE DAZZ /

JERSEY

- **PERFORMANCE BUILT**
Raglan sleeves offer optimal mobility in arms and shoulders while the rolled cuffs and collars minimize chafing
- **INCREASED VENTILATION**
Vented mesh panels placed in crucial areas of jersey to maximize air flow
- **MOISTURE WICKING**
100% polyester jersey material wicks away sweat and helps keep you cool
- **ADDITIONAL FEATURES**
 - No-fade sublimated graphics
 - Rib knit on collar for proper expansion
 - Drop tail design to keep jersey tucked into pant
 - Heat transfer neck label

PANT

- **PERFORMANCE COVERAGE**
Abrasion-tolerant materials, durable construction, and full grain leather knee panels provide coverage in crucial areas
- **MAXIMUM FLEXIBILITY**
Stretch panels placed throughout pant and accordion knee panels offer optimal performance and a versatile fit
- **SPECIALIZED FIT**
Adjustable side cinches, snap buttons, and ratchet-style closure tailors to the unique build of every rider
- **DURABLE CONSTRUCTION**
Polyester and nylon are combined with double and triple stitching for a pant that is made to last
- **RACE-READY POSITIONING**
Pre-curved profile shape naturally fits with rider sitting positions
- **ADDITIONAL FEATURES**
 - Small expansion stretch panels on waist
 - Purpose built TPR features
 - Performance mesh liner



FLO GREEN / YELLOW

JERSEY	S	M	L	XL
2912-	1392	1393	1394	1395
PANT	22	24	26	28
2903-	1407	1408	1409	1410

YOUTH PULSE TYDY /

JERSEY

- **VERSATILE FIT**
Set-in style sleeves tailor to the body's shape and form while accenting all riding styles
- **MOISTURE WICKING**
100% polyester jersey material wicks away sweat and helps keep you cool
- **COMFORT PANELS**
4-way stretch panels in the cuffs and collar provide an excellent feel and minimal chafing
- **ADDITIONAL FEATURES**
 - Sublimated no fade graphics
 - Heat transferred neck label

PANT

- **PRE-CURVED SHAPE**
The pre-curved chassis shape provides maximum comfort while in the rider attack or sitting positions
- **SPECIALIZED FIT**
Adjustable hip side cinches and ratchet-style closure tailors to the unique build of every rider
- **DURABLE CONSTRUCTION**
Polyester and nylon are combined with double and triple stitching for a pant that is made to last
- **PERFORMANCE COVERAGE**
Abrasion-tolerant materials, durable construction, and full grain leather knee panels provide coverage in crucial areas
- **ADDITIONAL FEATURES**
 - Purpose built TPR features
 - Athletic mesh liner



LIME / BLACK

JERSEY	2XS	XS	S	M	L	XL
2912-	1438	1439	1440	1441	1442	1443
PANT	18	20	22	24	26	28
2903-	1465	1466	1467	1468	1469	1470

PURPLE / FIRE

JERSEY	2XS	XS	S	M	L	XL
2912-	1432	1432	1434	1435	1436	1437
PANT	18	20	22	24	26	28
2903-	1459	1460	1461	1462	1463	1464

YOUTH PULSE AIR

JERSEY

- **MAXIMUM VENTILATION**
Fully vented mesh panels maximize air flow throughout body and keeps you cool
- **VERSATILE FIT**
Set-in style sleeves tailor to the body's shape and form while accenting all riding styles
- **MOISTURE WICKING**
100% polyester jersey material wicks away sweat and helps keep you cool
- **COMFORT PANELS**
4-way stretch panels in the cuffs and collar provide an excellent feel and minimal chafing
- **ADDITIONAL FEATURES**
 - Sublimated no fade graphics
 - Heat transferred neck label

PANT

- **MAXIMUM VENTILATION**
Fully perforated vented mesh panels maximizes air flow throughout and keeps you cool
- **PRE-CURVED SHAPE**
The pre-curved chassis shape provides maximum comfort while in the rider attack or sitting positions
- **SPECIALIZED FIT**
Adjustable hip side cinches and ratchet-style closure tailors to the unique build of every rider
- **DURABLE CONSTRUCTION**
Polyester and nylon are combined with double and triple stitching for a pant that is made to last
- **PERFORMANCE COVERAGE**
Abrasion-tolerant materials, durable construction, and full grain leather knee panels provide coverage in crucial areas
- **ADDITIONAL FEATURES**
 - Purpose built TPR features
 - Athletic mesh liner



AKTIV CACTUS

JERSEY	2XS	XS	S	M	L	XL
2912-	1380	1381	1382	1383	1384	1385
PANT	18	20	22	24	26	28
2903-	1411	1412	1413	1414	1415	1416



TYDY BLUES

JERSEY	2XS	XS	S	M	L	XL
2912-	1386	1387	1388	1389	1390	1391
PANT	18	20	22	24	26	28
2903-	1417	1418	1419	1420	1421	1422



MULTI

JERSEY	2XS	XS	S	M	L	XL
2912-	1414	1415	1416	1417	1418	1419
PANT	18	20	22	24	26	28
2903-	1441	1442	1443	1444	1445	1446

ORANGE / NAVY

JERSEY	2XS	XS	S	M	L	XL
2912-	1408	1409	1410	1411	1412	1413
PANT	18	20	22	24	26	28
2903-	1435	1436	1437	1438	1439	1440

RED / BLACK

JERSEY	2XS	XS	S	M	L	XL
2912-	1402	1403	1404	1405	1406	1407
PANT	18	20	22	24	26	28
2903-	1429	1430	1431	1432	1433	1434

**LIME / BLACK**

JERSEY	2XS	XS	S	M	L	XL
2912-	1420	1421	1422	1423	1424	1425
PANT	18	20	22	24	26	28
2903-	1447	1448	1449	1450	1451	1452

WHITE / BLACK

JERSEY	2XS	XS	S	M	L	XL
2912-	1396	1397	1398	1399	1400	1401
PANT	18	20	22	24	26	28
2903-	1423	1424	1425	1426	1427	1428

BLUE / BLACK

JERSEY	2XS	XS	S	M	L	XL
2912-	1426	1427	1428	1429	1430	1431
PANT	18	20	22	24	26	28
2903-	1453	1454	1455	1456	1457	1458

YOUTH SPECTRUM GLOVE /

- **COVERAGE**
Rubber backhand protection and layered backhand panels offer excellent coverage
- **COMFORT GRIP**
Lightly padded palm provides a comfortable grip
- **OPTIMAL AIR FLOW**
Mesh and Airprene construction, and perforated palm keeps hands cool throughout
- **ADDITIONAL FEATURES**
 - Notched wrist opening provides ease of access
 - Silicone treated finger tips for improved traction
 - Hook and loop wrist closure system
 - Wrapped thumb and gripping points for added durability

BLACK	2XS	XS	S	M	L
3332-	0893	0894	0895	0896	0897
RED	2XS	XS	S	M	L
3332-	0913	0914	0915	0916	0917
BLUE	2XS	XS	S	M	L
3332-	0898	0899	0900	0901	0902
GREEN	2XS	XS	S	M	L
3332-	0903	0904	0905	0906	0907
NAVY/ORG	2XS	XS	S	M	L
3332-	0987	0988	0989	0990	0991
WHITE	2XS	XS	S	M	L
3332-	0918	0919	0920	0921	0922
ORANGE	2XS	XS	S	M	L
3332-	0908	0909	0910	0911	0912
YELLOW	2XS	XS	S	M	L
3332-	0923	0924	0925	0926	0927



BLACK



PALM VIEW



RED



BLUE



GREEN



NAVY/ORANGE



WHITE



ORANGE



YELLOW

YOUTH VOID GLOVE

• LIGHTWEIGHT COMFORT

Fitted stretch backhand panel provides lightweight comfort

• QUICK ENTRY

Slip-on cuff provides quick entry

• OPTIMAL AIR FLOW

Perforated palm keeps hands cool

• ADDITIONAL FEATURES

- 4-way stretch finger gussets enhance mobility
- Screen printed palm graphics
- Wrapped thumb and gripping points for added durability

AKTIV RED/BLK	2XS	XS	S	M	L
3332 -	1085	1086	1087	1088	1089
AKTIV MULTI	2XS	XS	S	M	L
3332 -	1080	1081	1082	1083	1084
AKTIV CACTUS	2XS	XS	S	M	L
3332 -	1075	1076	1077	1078	1079
AKTIV BLK/WHT	2XS	XS	S	M	L
3332 -	1070	1071	1072	1073	1074
DAZZ WHT/BLK	2XS	XS	S	M	L
3332 -	1090	1091	1092	1093	1094
DAZZ MAG	2XS	XS	S	M	L
3332 -	1095	1096	1097	1098	1099
TYDY FIRE	2XS	XS	S	M	L
3332 -	1105	1106	1107	1108	1109
TYDY BLUES	2XS	XS	S	M	L
3332 -	1100	1101	1102	1103	1104



AKTIV RED/BLACK



PALM VIEW



AKTIV MULTI



AKTIV CACTUS



AKTIV BLACK/WHITE



DAZZ WHITE/BLACK



DAZZ MAGENTA



TYDY FIRE



TYDY BLUES

YOUTH SENTINEL GP

· LIGHTWEIGHT PROTECTION

Stone shield constructed with energy dispersing molded panels
Level 1 back protector constructed to reduce impact energy transmission

· SUPPORT

Adjustable elastic torso strap with ratcheting buckle closure

· ADDITIONAL FEATURES

- Strategically placed ventilation ports for maximum cooling
- Soft chassis liner molded for maximum comfort
- Stone shield tested and certified according to the basic requirements of Directive 89/686/EEC
- Back protector tested and certified according to European Standard EN 1621-2:2014

BLK/BLU
2701-0760

BLK/RED
2701-0761

BLK/WHT
2701-0758

WHT/BLK
2701-0759

BLK/ORG
2701-0762

BLK/FLO
2701-0763



BACK VIEW



BLACK/ORANGE



WHITE/BLACK



BLACK/FLO GREEN



BLACK/BLUE



BLACK/RED



BLACK/WHITE

YOUTH GUARDIAN

• UNIQUE CONSTRUCTION

Pressure fit molded comfort liner system provides a smooth inner chassis for maximum comfort

• SUPPORT

Adjustable waist buckle closure system

• ADDITIONAL FEATURES

- Level 1 back protector constructed to reduce impact energy transmission
- Stone shield constructed with energy dispersing molded panels
- Strategically placed ventilation ports for maximum cooling
- Refined fit for maximum deflector coverage
- Adjustable suspension shoulder guards with molded comfort liner
- Adjustable and removable biceps arm guards with molded comfort liner
- Stone shield tested and certified according to the basic requirements of Directive 89/686/EEC
- Back protector tested and certified according to European Standard EN 1621-2:2014

BLK/RED 2701	2XS/XS 0802	S/M 0803
BLK/BLU 2701	2XS/XS 0806	S/M 0807
BLK/ORG 2701	2XS/XS 0804	S/M 0805
BLK/SIL 2701	2XS/XS 0800	S/M 0801
WHT/BLK 2701	2XS/XS 0798	S/M 0799



BACK VIEW



BLACK/BLUE



BLACK/SILVER



BLACK/ORANGE



BLACK/RED



WHITE/BLACK

YOUTH SENTINEL PROTECTOR

• LIGHTWEIGHT PROTECTION

Stone shield constructed with energy dispersing molded panels

• SUPPORT

Adjustable elastic torso strap with ratcheting buckle closure

• ADDITIONAL FEATURES

- Strategically placed ventilation ports for maximum cooling
- Soft chassis liner molded for maximum comfort
- Tested according to the basic requirements of Directive 89/686/EEC

BLACK
2701-0782

WHT/BLK
2701-0783



BLACK



WHITE/BLACK

SAFETY WARNING: Riding a motorcycle is a dangerous activity. When riding, always wear a helmet, eye protection and protective clothing. There is no assurance that serious injury or death can be avoided even if you wear the product shown in this catalog and take all precautions to avoid every risk. Please ensure that your Thor products fit properly. Improperly fitting products can impair your ability to control your motorcycle.

YOUTH ENEMY GOGGLE - WRAP

- Innovative frame with aperture vent for maximum airflow
- Drilled frame ports for increased ventilation and fog resistance
- Anti-fog, scratch resistant lens with UV protection
- Optically correct polycarbonate lens for clear vision
- Clear lens included, replacement lenses available
- Dual post tear-off system ready. Tear-off packs available
- Single layer 12mm face foam for secure seal
- Adjustable woven strap with silicone grip for secure fit
- Plush goggle bag included for safe storage
- Tested and certified according to European Standard EN 1938:2010



SPLATTER/GREEN
2601 - 1739



SPLATTER/BLACK
2601 - 1472



TREAD/RED
2601 - 1736



WEB/WHITE
2601 - 1473

TEAR-OFF CLEAR 10 PACK
2602-0234



LENS CLEAR/BLK
2602-0235



LENS CLEAR/WHT
2602-0236



LENS SMOKE
2602-0600



SAFETY WARNING: Riding a motorcycle is a dangerous activity. When riding, always wear a helmet, eye protection and protective clothing. There is no assurance that serious injury or death can be avoided even if you wear the product shown in this catalog and take all precautions to avoid every risk. Please ensure that your Thor products fit properly. Improperly fitting products can impair your ability to control your motorcycle.

YOUTH ENEMY GOGGLE /



FLO GREEN/BLACK
2601-1737



FLO ORANGE/BLACK
2601-1738



BLUE/WHITE
2601-0719



WHITE/BLACK
2601-1471



PINK/BLACK
2601-0720



BLACK/WHITE
2601-0717



RED/BLACK
2601-0718

YOUTH FORCE XP KNEEGUARD

- **COMFORT & COOLING**
Perforated airprene chassis for support and secure fit.
- **ANATOMICAL KNEE ACTION**
Impact resistant, polyethylene kneecap with dual pivot system mimics anatomical action of the knee.
- **ADDITIONAL FEATURES**
 - Level 1 knee protector constructed to reduce impact energy transmission
 - Inverted post latching system
 - Adjustable hook and loop closure strap.
 - Asymmetrical design for comfort and fit.
 - Tested and certified according to European Standard EN 1621-1:2012
 - Sold in pairs

BLACK
2704-0431

RED
2704-0432



BLACK



RED

YOUTH CLINCH BELT

- **ADJUSTABLE**
Adjustable elastic straps with hook and loop retention system provides a secure fit
- **LIGHTWEIGHT AND DURABLE**
Lightweight, durable mesh construction
- **SUPPORT**
Vertical inserts for added support
- **ADDITIONAL FEATURES**
 - Kidney support for the lower back and posture
 - Dual pull hook and loop adjustment system
 - Ergonomic design provides support and mobility
 - Slim low profile TPRs for added support
 - Perforated and vented throughout

BLK/YEL
2703-0134

BLK/WHT
2703-0133



BLACK/YELLOW



BLACK/WHITE

YOUTH SECTOR GP KNEEGUARD

- Level 1 knee protector constructed to reduce impact energy transmission
- Durable polypropylene molded knee and shin panels
- Two adjustable retention straps reduce repositioning while riding
- Slim, compact design increases comfort while keeping the weight to a minimum
- Tested and certified according to European Standard EN 1621-1:2012

CHARCOAL/YELLOW
2704-0430



YOUTH SECTOR KNEEGUARD

- Durable polypropylene molded knee and shin panels
- Two adjustable retention straps for secure fit
- Slim, compact design increases comfort while keeping the weight to a minimum

BLACK
2704-0083



YOUTH QUADRANT KNEEGUARD

- 2-piece molded knee/shin panels
- Stitched-in foam patella donut for comfort
- Asymmetrical design for a specific fit
- Dual integrated elastic straps for a secure fit

BLACK
2704-0241



YOUTH QUADRANT ELBOW GUARD

- Adjustable closure system
- Moisture wicking interior panel reduces chafing
- Stitched-in foam elbow donut for comfort
- Extensive vent channels for airflow

BLACK
2706-0138



YOUTH BLITZ BOOTS

- Pre-curved injection molded shin plate
- 3 strap closure system featuring a unique "Y" strap over rider's instep
- Injection molded positive lock buckles
- Fully synthetic heat shield
- Injection molded medial abrasion plate
- Mesh liner promotes airflow
- Metal toe cap reinforces the outsole strength
- Uni-directional outsole with a steel shank
- Tested and certified according to European Standard EN 13634:2010

WHT/ORG	1	2	3	4	5	6	7
3411-	0326	0327	0328	0329	0330	0331	0332
BLK/GRN	1	2	3	4	5	6	7
3411-	0319	0320	0321	0322	0323	0324	0325
BLK/RED	1	2	3	4	5	6	7
3411-	0333	0334	0335	0336	0337	0338	0339
BLACK	1	2	3	4	5	6	7
3411-	0291	0292	0293	0294	0295	0296	0297
WHITE	1	2	3	4	5	6	7
3411-	0298	0299	0300	0301	0302	0303	0304



WHITE/ORANGE



BLACK/GREEN



BLACK/RED



WHITE



BLACK



YOUTH MX COOL SOCK

• COMFORT FIT

Lightweight yet durable material provides a more controlled feel

• MOISTURE WICKING

Constructed of Cool Max®, a special material that will keep your foot cooler and dryer longer

BLU/GRN

3431-0291

GRN/ORG

3431-0292



BLUE/GREEN



GREEN/ORANGE

YOUTH MX SOCK

• COMFORT FIT

Thick traditional MX sock construction for moisture control

• FLEXIBILITY

Ribbed panels in the cuff, ankle and instep for added comfort

• COVERAGE

Over-the-calf socks are ideal for riders who wear knee braces to prevent chafing

BLK/RED

3431-0288

BLK/CYN

3431-0287

CHR/ORG

3431-0289

GRN/YEL

3431-0290



BLACK/RED



BLACK/CYAN



CHARCOAL/ORANGE

GREEN/YELLOW

YOUTH PACK LITE JACKET

- Rear exhaust vents allow hot air to escape
- Soft dimple mesh lined collar for comfort
- Front and rear storage pockets
- Waterproof membrane shell with taped seams and water resistant zippers
- Adjustable drawstring waist closure
- Elastic cuffs

BLACK	S	M	L	XL
2922	0057	0058	0059	0060



SPEED AND STYLE

WOMEN'S





BROOK / WHIPPLE

WOMEN'S PULSE FACET /

JERSEY

- **VERSATILE FIT**
Set in style sleeves tailor to the body's shape and form while accenting all riding styles
- **MOISTURE WICKING**
100% polyester jersey material wicks away sweat and helps keep you cool
- **COMFORT PANELS**
4-way stretch panels in the cuffs and collar provide an excellent feel and minimal chafing
- **ADDITIONAL FEATURES**
 - Sublimated no fade graphics
 - Heat transferred neck label

PANT

- **PRE-CURVED SHAPE**
The pre-curved chassis shape provides maximum comfort while in the rider attack or sitting positions
- **SPECIALIZED FIT**
Adjustable hip side cinches and ratchet-style closure tailors to the unique build of every rider
- **DURABLE CONSTRUCTION**
Polyester and nylon are combined with double and triple stitching for a pant that is made to last.
- **PERFORMANCE COVERAGE**
Abrasion-tolerant materials, durable construction, and full grain leather knee panels provide coverage in crucial areas
- **ADDITIONAL FEATURES**
 - Purpose built TPR feature
 - Ergonomic design contours around body
 - Athletic mesh liner



BLACK / TEAL

JERSEY	XS	S	M	L	XL	
2911 -	0142	0143	0144	0145	0146	
PANT	3/4	5/6	7/8	9/10	11/12	13/14
2902	0193	0194	0195	0196	0197	0198

**BLUE / PINK**

JERSEY	XS	S	M	L	XL	
2911 -	0137	0138	0139	0140	0141	
PANT	3/4	5/6	7/8	9/10	11/12	13/14
2902	0187	0188	0189	0190	0191	0192

**WHITE / MAGENTA**

JERSEY	XS	S	M	L	XL	
2911 -	0132	0133	0134	0135	0136	
PANT	3/4	5/6	7/8	9/10	11/12	13/14
2902	0181	0182	0183	0184	0185	0186

WOMEN'S TERRAIN CONTOUR /

JERSEY

- **COVERAGE**
Abrasion resistant material on sleeves and shoulders
- **INCREASED VENTILATION**
Vented side panels and 3 quarter chest zipper helps keep you cool
- **MOISTURE WICKING**
100% polyester jersey material wicks away sweat and helps keep you cool
- **ADDITIONAL FEATURES**
 - Sublimated no fade graphics
 - Rib knit on collar for proper expansion
 - Heat transferred neck label
 - Reflective accents enhance visibility

PANT

- **OVER THE BOOT CONSTRUCTION**
Non-tapered lower leg construction allows for easy over the boot placement
- **CONVERTIBLE**
Hook and Loop panels above the knee can be opened to expose air intakes
- **STORAGE**
Two zippered pockets for storage
- **DURABLE CONSTRUCTION**
Polyester and nylon are combined with double stitch for a pant that is made to last. Hour after hour on the trails.
- **SPECIALIZED FIT**
Adjustable side cinches, snap buttons, and ratchet-style closure tailors to the unique build of every rider
- **PERFORMANCE COVERAGE**
Abrasion-tolerant materials, durable construction, and full grain leather knee panels provide coverage in crucial areas
- **ADDITIONAL FEATURES**
 - Refined chassis for increased comfort and performance
 - Interior hip pocket
 - Comfort mesh liner
 - Purpose built TPR
 - Internal gaiter at boot
 - Adjustable snap button ankle closure
 - Reflective accents enhance visibility
 - YKK zippers
 - Sublimated no fade graphics



BLACK / PINK

JERSEY	XS	S	M	L	XL
2911 -	0147	0148	0149	0150	0151
PANT	3/4	5/6	7/8	9/10	11/12 13/14
2902	0199	0200	0201	0202	0203 0204



WOMEN'S GUARDIAN

- **UNIQUE CONSTRUCTION**
Pressure fit molded comfort liner system provides a smooth inner chassis for maximum comfort
- **LIGHTWEIGHT AND DURABLE**
Refined fit for maximum deflector coverage
- **SUPPORT**
Adjustable waist buckle closure system
- **ADDITIONAL FEATURES**
 - Form fitted for women's physique
 - Stone shield constructed with energy dispersing molded panels
 - Level 1 back protector constructed to reduce impact energy transmission
 - Strategically placed ventilation ports for maximum cooling
 - Adjustable suspension shoulder guards with molded comfort liner
 - Adjustable and removable biceps arm guards with molded comfort liner
 - Stone shield tested and certified according to European Standard EN 14021:2003
 - Back protector tested and certified according to European Standard EN 1621-2:2014

BLACK/SILVER
2701-0797



BLACK/SILVER

SAFETY WARNING: Riding a motorcycle is a dangerous activity. When riding, always wear a helmet, eye protection and protective clothing. There is no assurance that serious injury or death can be avoided even if you wear the product shown in this catalog and take all precautions to avoid every risk. Please ensure that your Thor products fit properly. Improperly fitting products can impair your ability to control your motorcycle.

BACK VIEW

WOMEN'S BLITZ BOOTS

- Pre-curved injection molded shin plate
- 3 strap closure system featuring a unique "Y" strap over rider's instep
- Injection molded positive lock buckles
- Fully synthetic heat shield
- Injection molded medial abrasion plate
- Mesh liner promotes airflow
- Metal toe cap reinforces the outsole strength
- Uni-directional outsole with a steel shank
- Tested and certified according to European Standard EN 13634:2010

WHITE	5	6	7	8	9	10
3410-	1201	1202	1203	1204	1205	1206
BLK/MAG	5	6	7	8	9	10
3410-	1478	1479	1480	1481	1482	1483



WHITE



BLACK/MAGENTA

WOMEN'S SPECTRUM GLOVE

- **COVERAGE**
Rubber backhand protection and layered backhand panels offer excellent coverage
- **COMFORT GRIP**
Lightly padded palm provides a comfortable grip
- **OPTIMAL AIR FLOW**
Mesh and Airprene construction, and perforated palm keeps hands cool throughout
- **ADDITIONAL FEATURES**
 - Notched wrist opening provides ease of access
 - Silicone treated finger tips for improved traction
 - Hook and loop wrist closure system
 - Wrapped thumb and gripping points for added durability

BLK/PNK	S	M	L	XL
3331-	0127	0128	0129	0130

BLK/TEAL	S	M	L	XL
3331-	0131	0132	0133	0134



PALM VIEW



BLACK/PINK



BLACK/TEAL

WOMEN'S VOID GLOVE

- **LIGHTWEIGHT COMFORT**
Fitted stretch backhand panel provides lightweight comfort
- **QUICK ENTRY**
Slip-on cuff provides quick entry
- **OPTIMAL AIR FLOW**
Perforated palm keeps hands cool
- **ADDITIONAL FEATURES**
 - 4-way stretch finger gussets enhance mobility
 - Screen printed palm graphics
 - Wrapped thumb and gripping points for added durability

FACET PINK	S	M	L	XL
3331-	0135	0136	0137	0138

FACET TEAL	S	M	L	XL
3331-	0139	0140	0141	0142



PALM VIEW



BLACK/PINK



BLACK/TEAL



MEN'S SPORTSWEAR



COOPER / WEBB

BLOCKER TRACK JACKET

- **SUPERIOR MOVEMENT AND WARMTH**
Made to help you stay warm, dry and focused when you're training outside in the cold
- **FIT TO MOVE**
Stretch fabric and a slim fit allow full range of motion for training
- **MOISTURE WICKING**
Plush interior liner wicks away sweat and helps keep you cool
- **PRODUCT DETAILS**
- Content: 100% Polyester

GRY/BLK	S	M	L	XL	2XL
2920-	0475	0476	0477	0478	0479
BLU/BLK	S	M	L	XL	2XL
2920-	0480	0481	0482	0483	0484



GRAY/BLACK



BLUE/BLACK

MECH ZIP UP

- **MAXIMUM WARMTH**
Our hoodies are made with soft fleece fabric that keep you warm all day
- **PERFORMANCE BUILT**
Thermal lined hood with draw cord keeps warmth inside
- **ADDITIONAL FEATURES**
 - Set-in sleeves for natural range of motion
 - Rib cuffs and hem keep hoodie in place
 - Chest button pocket
 - Side pockets
 - Internal Pockets
 - Zipper pull
 - Embroidered Thor logos
- **PRODUCT DETAILS**
- Content: 60% Cotton, 40% Polyester

GRY/BLK	S	M	L	XL	2XL
3050-	3680	3681	3682	3683	3684



GRAY/BLACK

DRIVEN ZIP UP

- **MAXIMUM WARMTH**
Our hoodies are made with soft fleece fabric that keep you warm all day
- **PERFORMANCE BUILT**
Thermal lined hood with draw cord keeps warmth inside
- **ADDITIONAL FEATURES**
 - Set-in sleeves for natural range of motion
 - Rib cuffs and hem keep hoodie in place
 - Kangaroo style pocket
- **PRODUCT DETAILS**
- Content: 80% Cotton, 20% Polyester

BLK/WHT	S	M	L	XL	2XL
3050-	3865	3866	3867	3868	3869
NAVY/WHT	S	M	L	XL	2XL
3050-	3870	3871	3872	3873	3874



BLACK/WHITE



NAVY/WHITE

CHASE PULL OVER

• MAXIMUM WARMTH

Our hoodies are made with soft fleece fabric that keep you warm all day

• PERFORMANCE BUILT

Thermal lined hood with draw cord keeps warmth inside

• ADDITIONAL FEATURES

- Set-in sleeves for natural range of motion
- Rib cuffs and hem keep hoodie in place
- Kangaroo style pocket

• PRODUCT DETAILS

- Content: 80% Cotton, 20% Polyester

CHAR	S	M	L	XL	2XL
3050-	3860	3861	3862	3863	3864
CARD	S	M	L	XL	2XL
3050-	3855	3856	3857	3858	3859



CHARCOAL



CARDINAL

MAIN EVENT PULL OVER

• MAXIMUM WARMTH

Our hoodies are made with soft fleece fabric that keep you warm all day

• PERFORMANCE BUILT

Lined hood keeps warmth inside

• ADDITIONAL FEATURES

- Lined hood with draw cord
- Set-in sleeves for natural range of motion
- Rib cuffs and hem keep hoodie in place
- Kangaroo style pocket

• PRODUCT DETAILS

- Content: 80% Cotton, 20% Polyester

HTHR GRV/BUR	S	M	L	XL	2XL
3050-	3700	3701	3702	3703	3704
BLK/LIME	S	M	L	XL	2XL
3050-	3695	3696	3697	3698	3699



HEATHER GRAY/BURGUNDY



BLACK/LIME

DAZZ PULL OVER

• MAXIMUM WARMTH

Our hoodies are made with soft fleece fabric that keep you warm all day

• PERFORMANCE BUILT

Thermal lined hood with draw cord keeps warmth inside

• ADDITIONAL FEATURES

- Set-in sleeves for natural range of motion
- Rib cuffs and hem keep hoodie in place
- Kangaroo style pocket

• PRODUCT DETAILS

- Content: 80% Cotton, 20% Polyester

BLK/GRY	S	M	L	XL	2XL
3050-	3685	3686	3687	3688	3689
RED/BLK	S	M	L	XL	2XL
3050-	3690	3691	3692	3693	3694



BLACK/GRAY



RED/BLACK

ON THE GAS THERMAL /

- **PERFORMANCE BUILT**
Set-in long sleeves offer optimal mobility in arms and shoulders, and folded edges of sleeve cuffs and collar minimize chafing
- **PRODUCT DETAILS**
- Content: 52% Cotton, 48% Polyester

BLACK	S	M	L	XL	2XL
3030-	14690	14691	14692	14693	14694
HTR	S	M	L	XL	2XL
3030-	14695	14696	14697	14698	14699



BLACK



HEATHER

CHARGER LONG SLEEVE /

- **PERFORMANCE BUILT**
Set-in long sleeves offer optimal mobility in arms and shoulders, and folded edges of sleeve cuffs and collar minimize chafing
- **PRODUCT DETAILS**
- Content: 100% Cotton

BLACK	S	M	L	XL	2XL
3030-	14680	14681	14682	14683	14684
GRAY	S	M	L	XL	2XL
3030-	14685	14686	14687	14688	14689



BLACK



GRAY

OBJECTIV 3/4 SLEEVE /

- **PERFORMANCE BUILT**
Set-in long sleeves offer optimal mobility in arms and shoulders, and folded edges of sleeve cuffs and collar minimize chafing
- **PRODUCT DETAILS**
- Content: 50% Polyester, 25% Cotton, 25% Rayon

BLACK	S	M	L	XL	2XL
3030-	14670	14671	14672	14673	14674
WHITE	S	M	L	XL	2XL
3030-	14675	14676	14677	14678	14679



BLACK



WHITE

MITCHELL / HARRISON



GRAY/BLACK

MECH SHOP SHIRT /

- **PERFORM BETTER**
Our button up mechanic shirt helps keep you cool and comfortable while wrenching on your ride
- **PERFORMANCE BUILT**
Ergonomic back and shoulder seams allow you to move naturally
- **MOISTURE WICKING**
Plush interior wicks away sweat and helps keep you cool
- **ADDITIONAL FEATURES**
 - Chest pockets
 - Embroidered Thor Logos
- **PRODUCT DETAILS**
 - Content: 65% Polyester, 35% Cotton

GRY/BLK	S	M	L	XL	2XL
3040-	2157	2158	2159	2160	2161



GRAY/BLACK

MECH PIT POLO /

- **ENHANCED AIRFLOW**
Our polo shirt helps keep you cool and comfortable with soft fabric and a mesh-lined arm pit panel
- **PERFORMANCE BUILT**
Ergonomic shoulder seams allow you to move naturally
- **MOISTURE WICKING**
Plush interior wicks away sweat and helps keep you cool
- **PRODUCT DETAILS**
 - Content: 100% Polyester

GRY/BLK	S	M	L	XL	2XL
3040-	2162	2163	2164	2165	2166

MEN'S TEE SHIRTS

- **REGULAR TEE** Set-in sleeves offer optimal mobility in arms and shoulders, and folded edges of sleeve cuffs and collar minimize chafing. 30 Singles Super-Soft 100% spun cotton.
- **HEATHER TEE** Set-in sleeves offer optimal mobility in arms and shoulders, and folded edges of sleeve cuffs and collar minimize chafing. 30 Singles Super Soft 52% Cotton / 48% Polyester blend.



BLACK



NAVY



CHARCOAL



BLACK

AKTIV TEE

BLACK	S	M	L	XL	2XL
3030-	14585	14586	14587	14588	14589
NAVY	S	M	L	XL	2XL
3030-	14590	14591	14592	14593	14594

PININ TEE

CHAR	S	M	L	XL	2XL
3030-	14615	14616	14617	14618	14619
BLK	S	M	L	XL	2XL
3030-	14610	14611	14612	14613	14614



BLACK



WHITE



NAVY



WHITE

ROCKER TEE

BLACK	S	M	L	XL	2XL
3030-	14630	14631	14632	14633	14634
WHITE	S	M	L	XL	2XL
3030-	14635	14636	14637	14638	14639

SANO TEE

NAVY	S	M	L	XL	2XL
3030-	14650	14651	14652	14653	14654
WHITE	S	M	L	XL	2XL
3030-	14655	14656	14657	14658	14659



CHARCOAL HEATHER



RED HEATHER

ARCHIE TEE

CHR HTR	S	M	L	XL	2XL
3030-	14595	14596	14597	14598	14599
RED HTR	S	M	L	XL	2XL
3030-	14600	14601	14602	14603	14604



ROYAL HEATHER

CREW TEE /

RYL HTR	S	M	L	XL	2XL
3030-	14625	14626	14627	14628	14629
GRY HTR	S	M	L	XL	2XL
3030-	14620	14621	14622	14623	14624



GRAY HEATHER



CHARCOAL HEATHER

SHROUD POCKET TEE /

CHR HTR	S	M	L	XL	2XL
3030-	14660	14661	14662	14663	14664
RED HTR	S	M	L	XL	2XL
3030-	14665	14666	14667	14668	14669



RED HEATHER



BROWN

ROOST TEE /

BROWN	S	M	L	XL	2XL
3030-	14640	14641	14642	14643	14644
OLIVE	S	M	L	XL	2XL
3030-	14645	14646	14647	14648	14649



OLIVE



BLACK



CHARCOAL

BERM TEE /

CHAR	S	M	L	XL	2XL
3030-	14605	14606	14607	14608	14609



JASON / ANDERSON

AKTIV FLEX FIT HAT

Thor and Flexfit bring a revolutionary cap that is the lighter, sleeker, smarter and more comfortable choice. It fuses panels with a seamless, stitch-free finish and it couples a lightweight visor fabrication with a new 3-Layer multifunction sweatband. There's even patent-pending stain block tech that prevents sweat staining on the cap's crown. New lightweight, hard buckram.

- **PRODUCT DETAILS**
 - Antibacterial, quick drying, stain-resistant fabric
 - Panels are unified without sewing using ultralight Flexfit bond tape that is antibacterial and thermal-regulating
 - Cloud cushioned sweatband absorbs moisture faster, and uses the highest grade stain blocking technology
 - Permacurv® featherweight visor is not only lighter, but more water-resistant
 - Laser cut eyelets
 - Structured, mid-profile, six-panel
 - Content: 92% Polyester, 8% Spandex



BLACK/WHITE
2501- 2524 2525



NAVY/ORANGE
2501- 2526 2527

ARCHIE CURVED SNAPBACK

The Thor Adjustable Archie Hat is made with a five-panel, flat-brim profile for pure comfort and vintage style.

- **BENEFITS**
 - Absorbent sweatband helps keep sweat out of your eyes
 - Adjustable strap at back for a custom fit and premium look
 - Woven eyelets at side panels for breathability
 - 5-panel design with interior taping for comfort and classic style
- **PRODUCT DETAILS**
 - Content: 60% Cotton, 40% Polyester



CHARCOAL/BLACK
2501-2523



BLACK/RED
2501-2522

CREW SNAPBACK

The Thor Adjustable Crew Hat is made with a six-panel, flat-brim profile for pure comfort and vintage style.

- **BENEFITS**
 - Absorbent sweatband helps keep sweat out of your eyes
 - Adjustable strap at back for a custom fit and premium look
 - Woven eyelets at side panels for breathability
 - 6-panel design with interior taping for comfort and classic style
- **PRODUCT DETAILS**
 - Content: 55% Linen, 45% Cotton



GRAY LINEN
2501-2521



BLUE CHAMBRAY
2501-2520

DAZZ SNAPBACK

The Thor Dazz Snapback features a high density printed logo and mesh panels for breathable comfort. A classic snap closure offers a customized fit.

- **BENEFITS**
 - Six panels with interior taping for durability
 - Fabric: 60% Cotton, 40% Polyester



WHITE/RED
2501-2517



BLACK/WHITE
2501-2516

TRUCKER SNAPBACK

The Thor Trucker Hat features an embroidered logo and mesh panels for breathable comfort. A classic snap closure offers a customized fit.

- **PRODUCT DETAILS**

- Six panels with interior taping for durability
- Content: 64% Polyester, 36% Cotton



CHARCOAL/YELLOW
2501-2518



GRAY/CARDINAL
2501-2519

RACE SPEC BEANIE

- **MAXIMUM COMFORT**

Our beanies are made with soft, stretchy fabric that has a lightweight feel for comfortable coverage on chilly days.

- **ADDITIONAL FEATURES**

- Rib cuff lends a secure fit
- Reinforced top seams enhance durability
- Light, single-layer design provides comfortable coverage

- **PRODUCT DETAILS**

- Content: 100% Acrylic



BLACK/YELLOW
2501-2510



NAVY/ORANGE
2501-2511

RUTTS BEANIE

- **MAXIMUM COMFORT**

Our beanies are made with soft, stretchy fabric that has a lightweight feel for comfortable coverage on chilly days.

- **ADDITIONAL FEATURES**

- Rib cuff lends a secure fit
- Reinforced top seams enhance durability
- Light, single-layer design provides comfortable coverage

- **PRODUCT DETAILS**

- Content: 100% Acrylic



CHARCOAL/BLACK
2501-2508



RED/BLACK
2501-2509

MCKENSIE POM POM BEANIE

- **MAXIMUM COMFORT**

Our beanies are made with soft, stretchy fabric that has a lightweight feel for comfortable coverage on chilly days.

- **ADDITIONAL FEATURES**

- Rib cuff lends a secure fit
- Reinforced top seams enhance durability
- Light, single-layer design provides comfortable coverage

- **PRODUCT DETAILS**

- Content: 83% Acrylic, 15% Wool, 2% Spandex



GRAY/PINK
2501-2069



GRAY/MAROON
2501-2068



BLACK/YELLOW
2501-2067

YOUTH SPORTSWEAR



RYDER / DIFRANCESCO

TALON / HAWKINS

YOUTH MECH ZIP UP

- **MAXIMUM WARMTH**
Our hoodies are made with soft fleece fabric that keep you warm all day
- **PERFORMANCE BUILT**
Thermal lined hood keeps warmth inside
- **ADDITIONAL FEATURES**
 - Thermal lined hood
 - Set-in sleeves for natural range of motion
 - Rib cuffs and hem keep the hoodie in place
 - Chest button pocket
 - Side pockets
 - Internal Pockets
 - Zipper pull
 - Embroidered Thor logos
- **PRODUCT DETAILS**
 - Content: 60% Cotton, 40% Polyester

GRY/YEL	S	M	L	XL
3052-	0381	0382	0383	0384



GRAY/YELLOW

YOUTH DAZZ PULL OVER

- **MAXIMUM WARMTH**
Our hoodies are made with soft fleece fabric that keep you warm all day
- **PERFORMANCE BUILT**
Lined hood keeps warmth inside
- **ADDITIONAL FEATURES**
 - Set-in sleeves for natural range of motion
 - Rib cuffs and hem keep the hoodie in place
 - Kangaroo style pocket
- **PRODUCT DETAILS**
 - Content: 80% Cotton, 20% Polyester

BLK/GRY	S	M	L	XL
3052-	0373	0374	0375	0376

RED/BLK	S	M	L	XL
3052-	0377	0378	0379	0380



BLACK/GRAY



RED/BLACK

YOUTH OBJECTIV LONG SLEEVE

- **PERFORMANCE BUILT**
Set-in long sleeves offer optimal mobility in arms and shoulders, and folded edges of sleeve cuffs and collar minimize chafing
- **PRODUCT DETAILS**
 - Content: 100% Cotton

BLACK	XS	S	M	L	XL
3032-	2425	2426	2427	2428	2429

WHITE	XS	S	M	L	XL
3032-	2430	2431	2432	2433	2434



BLACK



WHITE



RED



NAVY



BLACK



CHARCOAL

YOUTH AKTIV TEE /

• PERFORMANCE BUILT

Set-in sleeves offer optimal mobility in arms and shoulders, and folded edges of sleeve cuffs and collar minimize chafing

• PRODUCT DETAILS

- Content: 100% Cotton

RED	XS	S	M	L	XL
3032-	2440	2441	2442	2443	2444
NAVY	XS	S	M	L	XL
3032-	2435	2436	2437	2438	2439

YOUTH PININ TEE /

• PERFORMANCE BUILT

Set-in sleeves offer optimal mobility in arms and shoulders, and folded edges of sleeve cuffs and collar minimize chafing

• PRODUCT DETAILS

- Content: 100% Cotton

BLACK	XS	S	M	L	XL
3032-	2450	2451	2452	2453	2454
CHAR	XS	S	M	L	XL
3032-	2455	2456	2457	2458	2459



RED



CHARCOAL

YOUTH SHROUD POCKET TEE /

• PERFORMANCE BUILT

Set-in sleeves offer optimal mobility in arms and shoulders, and folded edges of sleeve cuffs and collar minimize chafing

• PRODUCT DETAILS

- Content: 100% Cotton

RED	XS	S	M	L	XL
3032-	2465	2466	2467	2468	2469
CHAR	XS	S	M	L	XL
3032-	2460	2461	2462	2463	2464



BLACK

YOUTH ROOST TEE /

• PERFORMANCE BUILT

Set-in sleeves offer optimal mobility in arms and shoulders, and folded edges of sleeve cuffs and collar minimize chafing

• PRODUCT DETAILS

- Content: 100% Cotton

BLACK	XS	S	M	L	XL
3032-	2445	2446	2447	2448	2449



RED



NAVY



BLACK



CHARCOAL

TODDLER AKTIV TEE /

• PERFORMANCE BUILT

Set-in sleeves offer optimal mobility in arms and shoulders, and folded edges of sleeve cuffs and collar minimize chafing

• PRODUCT DETAILS

- Content: 100% Cotton

NAVY	2T	3T	4T
3032-	2476	2477	2478
RED	2T	3T	4T
3032-	2479	2480	2481

TODDLER PININ TEE /

• PERFORMANCE BUILT

Set-in sleeves offer optimal mobility in arms and shoulders, and folded edges of sleeve cuffs and collar minimize chafing

• PRODUCT DETAILS

- Content: 100% Cotton

BLACK	2T	3T	4T
3032-	2470	2471	2472
CHAR	2T	3T	4T
3032-	2473	2474	2475



CRUSH BLACK/WHITE



CRUSH ROYAL BLUE/YELLOW

INFANT SUPERMINI /

• FEATURES

Screen printed graphics, Girls colors on page 151

• PRODUCT DETAILS

- Content: 100% Cotton

CRUSH BLK/WHT	0-6	6-12	12-18	18-24
3032-	2516	2517	2518	2519
CRUSH BLU/YEL	0-6	6-12	12-18	18-24
3032-	2528	2529	2530	2531



YOUTH GIRLS SPORTSWEAR



TEAL



HOT PINK

TODDLER AKTIV TEE /

- **PERFORMANCE BUILT**

Set-in sleeves offer optimal mobility in arms and shoulders, and folded edges of sleeve cuffs and collar minimize chafing

- **ADDITIONAL FEATURES**

- Content: 100% Cotton

TEAL	2T	3T	4T
3032-	2502	2503	2504
PINK	2T	3T	4T
3032-	2505	2506	2507

GIRL'S PININ PULL OVER

- **MAXIMUM WARMTH**
Our hoodies are made with soft fleece fabric that keep you warm all day
- **PERFORMANCE BUILT**
Lined hood keeps warmth inside
- **ADDITIONAL FEATURES**
 - Set-in sleeves for natural range of motion
 - Rib cuffs and hem keep the hoodie in place
 - Kangaroo style pocket
- **PRODUCT DETAILS**
 - Content: 100% Cotton

CHAR	S	M	L	XL
3052-	0385	0386	0387	0388
HTR GRY	S	M	L	XL
3052-	0389	0390	0391	0392



CHARCOAL



HEATHER GRAY



TEAL



RASPBERRY



BLACK



GRAY

GIRL'S AKTIV TEE

- **PERFORMANCE BUILT**
Set-in sleeves offer optimal mobility in arms and shoulders, and folded edges of sleeve cuffs and collar minimize chafing
- **ADDITIONAL FEATURES**
 - Content: 52% Cotton, 48% Polyester

TEAL	XS	S	M	L	XL
3032-	2482	2483	2484	2485	2486
RASP	XS	S	M	L	XL
3032-	2487	2488	2489	2490	2491

GIRL'S FACET TEE

- **PERFORMANCE BUILT**
Set-in sleeves offer optimal mobility in arms and shoulders, and folded edges of sleeve cuffs and collar minimize chafing
- **ADDITIONAL FEATURES**
 - Content: 52% Cotton, 48% Polyester

BLACK	XS	S	M	L	XL
3032-	2492	2493	2494	2495	2496
GRAY	XS	S	M	L	XL
3032-	2497	2498	2499	2500	2501

INFANT SUPERMINI

- **FEATURES**
Screen printed graphics, *Boys colors on page 149
- **PRODUCT DETAILS**
 - Content: 100% Cotton

CRUSH HOT PNK/BLK	0-6	6-12	12-18	18-24
3032-	2524	2525	2526	2527
CRUSH TEAL/WHT	0-6	6-12	12-18	18-24
3032-	2520	2521	2522	2523
CHAMP PNK/WHT	0-6	6-12	12-18	18-24
3032-	2508	2509	2510	2511
CHAMP HTR/WHITE	0-6	6-12	12-18	18-24
3032-	2512	2513	2514	2515

CRUSH
HOT PINK/BLACKCRUSH
TEAL/WHITECHAMP
PINK/WHITECHAMP
HEATHER/WHITE

WOMEN'S SPORTSWEAR



WOMEN'S FIN ZIP

- **MAXIMUM WARMTH**
Our hoodies are made with soft fleece fabric that keep you warm all day
- **PERFORMANCE BUILT**
Lined hood keeps warmth inside
- **ADDITIONAL FEATURES**
 - Lined hood with draw cord
 - Set-in sleeves for natural range of motion
 - Rib cuffs and hem keep the hoodie in place
 - Kangaroo style pocket
- **PRODUCT DETAILS**
 - Content: 80% Cotton, 20% Polyester

BLACK	S	M	L	XL
3051-	0935	0936	0937	0938

PINK	S	M	L	XL
3051-	0939	0940	0941	0942



BLACK



PINK

WOMEN'S PININ PULL OVER

- **MAXIMUM WARMTH**
Our hoodies are made with soft fleece fabric that keep you warm all day
- **PERFORMANCE BUILT**
Lined hood keeps warmth inside
- **ADDITIONAL FEATURES**
 - Lined hood with draw cord
 - Set-in sleeves for natural range of motion
 - Rib cuffs and hem help keep the hoodie in place
 - Kangaroo style pocket
- **PRODUCT DETAILS**
 - Content: 50% Polyester, 25% Cotton, 25% Rayon

CARBON	S	M	L	XL
3051-	0943	0944	0945	0946

HTHR PINK	S	M	L	XL
3051-	0947	0948	0949	0950



CARBON



HEATHER PINK

WOMEN'S ROOST OFF THE SHOULDER

- **ADDITIONAL FEATURES**
 - Screen printed graphics
 - Off-the-shoulder French terry scoop crew
 - 2x1 ribbing cuffs and waistband
 - Raglan sleeves
- **PRODUCT DETAILS**
 - Content: 68% Cotton, 32% Polyester

BLUE	S	M	L	XL
3051-	0951	0952	0953	0954

GRAY	S	M	L	XL
3051-	0955	0956	0957	0958



BLUE



GRAY



VINTAGE BLACK

PREMIUM HEATHER

WOMEN'S FACET POCKET TEE /

• PERFORMANCE BUILT

Set-in sleeves offer optimal mobility in arms and shoulders, and folded edges of sleeve cuffs and collar minimize chafing

• PRODUCT DETAILS

- Content: 50% Polyester, 25% Cotton, 25% Rayon

VINT BLK	S	M	L	XL
3031-	3006	3007	3008	3009
HTR	S	M	L	XL
3031-	3010	3011	3012	3013



BLACK

OLIVE

WOMEN'S ROOST DOLMAN TEE /

• PERFORMANCE BUILT

Set-in sleeves offer optimal mobility in arms and shoulders, and folded edges of sleeve cuffs and collar minimize chafing

• PRODUCT DETAILS

- Content: 100% Cotton

BLACK	S	M	L	XL
3031-	2998	2999	3000	3001
OLIVE	S	M	L	XL
3031-	3002	3003	3004	3005



BLACK

HOT PINK

WOMEN'S PININ RACERBACK TANK /

• FEATURES

- Screenprinted graphics
- Woven loop label

• PRODUCT DETAILS

- Content: 50% Polyester, 25% Cotton, 25% Rayon

BLACK	S	M	L	XL
3031-	3014	3015	3016	3017
HOT PNK	S	M	L	XL
3031-	3018	3019	3020	3021



BLACK

HOT PINK

WOMEN'S AKTIV TEE /

• PERFORMANCE BUILT

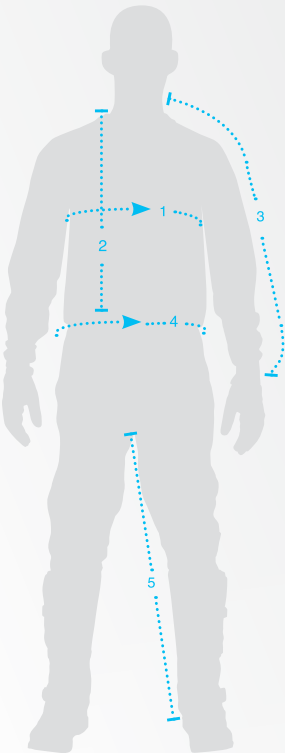
Set-in sleeves offer optimal mobility in arms and shoulders, and folded edges of sleeve cuffs and collar minimize chafing

• PRODUCT DETAILS

- Content: 100% Cotton

BLACK	S	M	L	XL
3031-	2990	2991	2992	2993
HOT PNK	S	M	L	XL
3031-	2994	2995	2996	2997





MEN'S FUSE JERSEY SIZING

	S	M	L	XL	2XL
1. CHEST	49.5 cm	53 cm	57 cm	70 cm	64.75 cm
2. BODY LENGTH	77.5 cm	80 cm	82.5 cm	87.5 cm	89 cm
3. SLEEVE LENGTH	75.5 cm	76.8 cm	78 cm	80.5 cm	82 cm

MEN'S PULSE JERSEY SIZING

	S	M	L	XL	2XL
1. CHEST	53.5 cm	57 cm	61 cm	65 cm	68.5 cm
2. BODY LENGTH	79 cm	79 cm	80 cm	81 cm	84 cm
3. SLEEVE LENGTH	76 cm	77.5 cm	79 cm	80 cm	81 cm

MEN'S PRIME FIT JERSEY SIZING

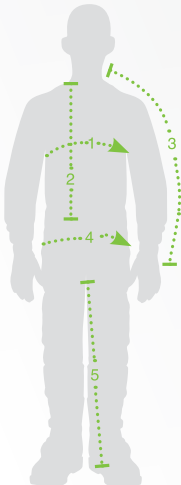
	S	M	L	XL	2XL
1. CHEST	43 cm	48 cm	52 cm	56 cm	63 cm
2. BODY LENGTH	79 cm	79 cm	80 cm	81 cm	84 cm
3. SLEEVE LENGTH	70.5 cm	71 cm	73.5 cm	75 cm	76 cm

MEN'S PANT SIZING

	28	30	32	34	36	38	40	42	44	46	48
4. WAIST	68.5-71 cm	73.5-76 cm	79-81 cm	84-86.5 cm	89-91.5 cm	94-86.5 cm	99-101.5 cm	104-106.5 cm	109-112 cm	114-117 cm	119-122 cm
5. INSEAM	70 cm	71 cm	73.5 cm	76 cm	79 cm	80 cm	80 cm	81 cm	81 cm	82.5 cm	82.5 cm

MEN'S OFF-ROAD PANT SIZING

	28	30	32	34	36	38	40	42	44	46	48
4. WAIST	68.5-71 cm	73.5-76 cm	79-81 cm	84-86.5 cm	89-91.5 cm	94-86.5 cm	99-101.5 cm	104-106.5 cm	109-112 cm	114-117 cm	119-122 cm
5. INSEAM	75 cm	76 cm	77.5 cm	79 cm	81 cm	81 cm	81 cm	81 cm	81 cm	81 cm	81 cm

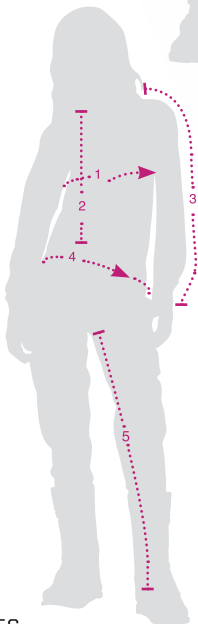


YOUTH JERSEY SIZING

	2XS	XS	S	M	L	XL
1. CHEST	33 cm	35.5 cm	38 cm	40.5 cm	43 cm	46 cm
2. BODY LENGTH	52 cm	56 cm	60 cm	62 cm	66 cm	70 cm
3. SLEEVE LENGTH	47 cm	51 cm	55 cm	58.5 cm	62 cm	66 cm

YOUTH PANT SIZING

	18	20	22	24	26	28
4. WAIST	43-46 cm	48-51 cm	53-56 cm	53-61 cm	63.5-66 cm	68.5-71 cm
5. INSEAM	41 cm	51.5 cm	56.5 cm	60 cm	63.5 cm	66 cm



WOMEN'S JERSEY SIZING

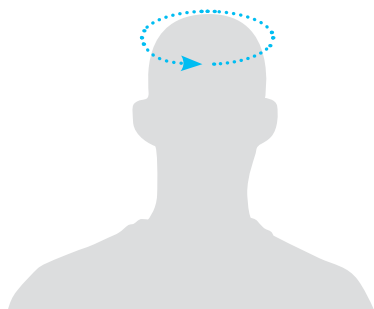
	XS	S	M	L	XL
1. CHEST	46 cm	48 cm	51 cm	53.5 cm	56 cm
2. BODY LENGTH	73.5 cm	75 cm	75 cm	76 cm	76 cm
3. SLEEVE LENGTH	63.5 cm	67 cm	71 cm	75 cm	76 cm

WOMEN'S PANT SIZING

	3/4	5/6	7/8	9/10	11/12	13/14
4. WAIST	61 cm	66 cm	71 cm	76 cm	81 cm	86.5 cm
5. INSEAM	67 cm	69 cm	71 cm	73 cm	75 cm	77 cm

HELMET & HAT SIZING

* ALL SIZING CHARTS SERVE ONLY AS A GUIDE. TO ENSURE THE PROPER FIT, ALWAYS TRY ON THE REAL PRODUCT.



HELMET SIZING

	XS	S	M	L	XL	2XL
HAT SIZE	6 ⁵ / ₈ "-6 ³ / ₄ "	6 ⁷ / ₈ "-7"	7 ¹ / ₈ "-7 ¹ / ₄ "	7 ³ / ₈ "-7 ¹ / ₂ "	7 ⁵ / ₈ "-7 ³ / ₄ "	7 ⁷ / ₈ "-8"
INCHES	20 ³ / ₄ "-21 ¹ / ₄ "	21 ⁵ / ₈ "-22"	22 ¹ / ₂ "-22 ³ / ₄ "	23 ¹ / ₄ "-23 ⁵ / ₈ "	24"-24 ¹ / ₂ "	24 ³ / ₄ "-23 ⁵ / ₈ "
CENTIMETERS	53-54 CM	55-56 CM	57-58 CM	59-60 CM	61-62 CM	63-64 CM

HAT SIZING

	S/M	L/XL
HAT SIZE	6 ³ / ₄ "-7 ¹ / ₄ "	7 ¹ / ₈ "-7 ⁵ / ₈ "
INCHES	21 ¹ / ₄ "-22 ³ / ₄ "	21 ¹ / ₂ "-24"
CENTIMETERS	54-58 CM	57-61 CM

BOOT SIZING

* ALL SIZING CHARTS SERVE ONLY AS A GUIDE. TO ENSURE THE PROPER FIT, ALWAYS TRY ON THE REAL PRODUCT.

BLITZ MEN'S SIZING

US	7	8	9	10	11	12	13	14	15
UK	5	6	7	8	9	10	11	12	13
EU	40.5	42	43	44.5	45.5	47	48	49.5	51

BLITZ YOUTH SIZING

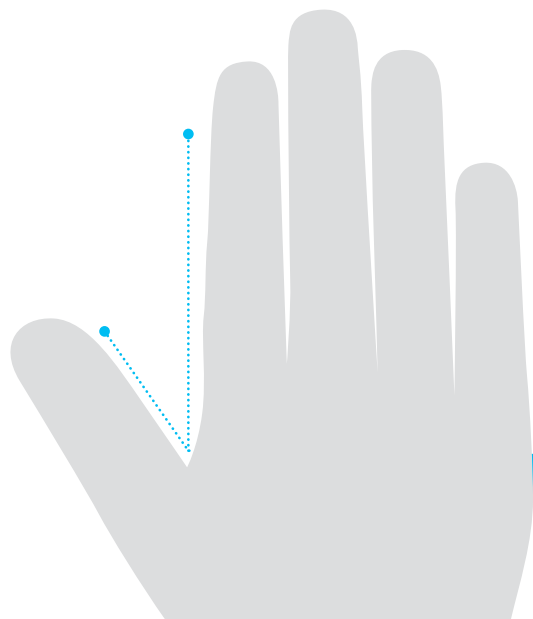
US	1	2	3	4	5	6	7
UK	13	1	2	3	4	5	6
EU	32	33	34	36	37	38	39

BLITZ WOMEN'S SIZING

US	5	6	7	8	9	10
UK	2.5	3.5	4.5	5.5	6.5	7.5
EU	35	36	37,5	38,5	40	42

GLOVE SIZING

* ALL SIZING CHARTS SERVE ONLY AS A GUIDE. TO ENSURE THE PROPER FIT, ALWAYS TRY ON THE REAL PRODUCT.



HOW TO DETERMINE YOUR GLOVE SIZE

Thor glove size is determined by measuring the width of your palm at its widest point below the knuckles. To get this measurement, place your hand on the page with the intersection of your thumb and palm positioned at the dotted "V" line and on top of the Men's and Women's measuring guide. This will give you your estimated glove size.


XS S M L XL XXL MEN'S

 = YOUTH SIZE AVAILABLE

 = EXTRA LARGE SIZE AVAILABLE

FUSE DAZZ / P.10



FLO GRN/YEL 

FUSE LIT / P.10



BLACK

FUSE PININ / P.12



BLK/LIME



NAVY/RED



ORG/BLK

FUSE OBJECTIV / P.14



GRAY/BLK



BLUE/NAVY

FUSE AIR PININ / P.18



WHT/PURPLE




WHT/RED

FUSE AIR DAZZ / P.19



FLO ORG/WHT 



MAGENTA/YEL 

PRIME FIT ROHL / P.24



FLO GRN/BLK



FLO ORG/GRAY



BLUE/NAVY



BLK/WHT

PULSE AKTIV / P.30



BLUE/BLK 



MULTI 



WHT/BLK 



RED/BLK 



ORG/NAVY 



LIME/BLK 

PULSE: COVERT / P.34



MIDNIGHT

BLACKOUT / P.34



BLACK

WHITEOUT / P.35



WHITE

PULSE VELOW / P.36



NAVY/LIME



BLK/ORG

PULSE AIR: AKTIV / P.39



CACTUS



SAND

COVERT / P.39



CAMO



BLACKOUT

TERRAIN / P.43

RANGE JACKET & PANT / P.45



BLK/CHAR



CHAR/ORG

**YOUTH PULSE
TYDY** / P.114



PURPLE/FIRE

FLO GRN/BLK

**YOUTH PULSE
AIR: AKTIV** / **TYDY** / P.116



BLUES

CACTUS

**WOMEN'S PULSE
FACET** / P.130



BLK/TEAL

BLUE/PINK

WHT/MAGENTA

**WOMEN'S TERRAIN
CONTOUR** / P.131



BLK/PINK

RAIN SUIT / P.47



BLACK

PHASE JACKET / P.46



BLK/CHAR

CHAR/ORG

CEMENT/NAVY

PACK JACKET / P.47



BLK/CHAR

CHAR/ORG

CEMENT/NAVY

RAIN JACKET / P.46



CLEAR

REBOUND / P.50



BLK/LIME

BLK/WHT

CHAR/ORG

NAVY/YEL

RED

DRAFT COMB / P.52



BLK/FLO ACID

NAVY/ORG

DRAFT INDI / P.52



RED/WHT

YEL/BLU

FLOW / P.54



BLACK

BLUE

NAVY/ORG

RED

DEFEND / P.55



BLK/WHT

CHAR/ORG

BLACK

INVERT: FLECTION / P.56



BLACK

WHITE

PIX / P.56



BLUE

GREEN

RHYTHM / P.56



RED

YELLOW

TRACER / P.56



MULTI

YOUTH VOID TYDY / P.119



BLUES

FIRE

SPECTRUM / P.58



BLACK

WHITE

BLUE

GREEN

YELLOW

ORANGE

RED

NAVY/ORG

WOMEN'S SPECTRUM / P.135



BLK/PINK

BLK/TEAL

VOID AKTIV / P.60



BLK/WHT

CACTUS

MULTI

RED

VOID COVERT / P.60



MIDNIGHT

SAND

VOID DAZZ / P.60



MAGENTA

WHITE

WOMEN'S VOID FACET / P.135



PINK

TEAL

 = YOUTH SIZE AVAILABLE

 = EXTRA LARGE SIZE AVAILABLE

VERGE VORTECH / P.64



FLO GRN/NAVY



FLO ORG/GRAY



WHT/GRAY

VERGE DAZZ / P.68



FLO ORG/WHT



MAGENTA/BLK

VERGE REBOUND / P.70



FLO GRN/BLK



FLO ORG/BLK

VERGE OBJECTIV / P.69



MATTE BLK/GRAY

VERGE SOLID / P.71



MATTE BLACK



WHITE

SNIPER WARSHIP / P.74



CHAR/ORG



SAND/BLK



ORG/WHT



LIME/WHITE



BLACK/RED



WHT/BLK

SNIPER GEO / P.74



YEL/BLK



NAVY/ORG



RED/WHT



BLUE/WHT



WHT/BLK

SNIPER BARRED / P.74

CONQUER / P.76



FLO GRN/BLK



FLO ORG/BLK



FLO PINK/BLK



BLK/WHT



STEEL/BLK



PINK/WHT

CONQUER / P.76



ORG/NAVY



GUNMETAL/GRN



BLUE/WHT



YEL/BLK



RED/WHT

ENEMY PRINTED / P.78



SPLATTER/GRN 



TREAD/YEL



TREAD/RED 



SPLATTER/BLK 



WEB/WHT 

ENEMY FLUORESCENT / P.78



FLO GRN/BLK 



FLO ORG/BLK 



WHT/BLK



FLO ORG/BLK



RED/BLK



BLK/WHT

ENEMY SAND / P.79

ENEMY / P.79



BLUE/WHT



RED/BLK



YEL/BLK



PINK/BLK



WHT/BLK



BLK/WHT

SENTINEL GP / P.82



BLK/FLO ORG



BLK/FLO GRN



BLUE/BLK



RED/BLK



WHT/BLK



BLK/WHT

SENTINEL CE / P.83



WHT/BLK



BLACK

GUARDIAN / P.84



BLK/RED



BLK/ORG



BLK/BLUE



WHT/BLK



BLK/SILVER

WOMEN'S GUARDIAN / P.134



BLK/SILVER

SENTRY XP / P.86



BLACK

SENTRY RIDGE / P.88



BLACK

SENTRY VEST / P.88



BLACK

SENTRY ELBOW / P.88



BLACK

FORCE XP KNEE / P.90



RED



BLACK

STATIC KNEE / P.91



BLACK

QUADRANT KNEE / P.91



BLACK

STATIC ELBOW / P.91



BLACK

QUADRANT ELBOW / P.91



BLACK

SECTOR GP KNEE / P.92



CHAR/YEL

SECTOR KNEE / P.92



BLACK

FORCE BELT / P.93



BLK/RED/WHT



BLK/GRAY/WHT

CLINCH BELT / P.93



BLK/YEL



BLK/WHT

COMP PANT / P.94



BLACK NAVY/ORG

COMP SHORT SE / P.94



BLACK

COMP SHORT / P.94



BLACK

COMP KNEESLEEVE / P.94



BLACK

NAVY/ORG

COMP FLEX DEFLECTOR / P.95



GRAY

COMP DEFLECTOR / P.95



BLACK

COMP SHIRT / P.95



BLACK

 = YOUTH SIZE AVAILABLE

 = EXTRA LARGE SIZE AVAILABLE

COMP SOCK / P.96



BLACK NAVY/ORG

MOTO SUB SOCK / P.96



LIME

RED

MOTO KNIT SOCK / P.96



AKTIV

DAZZ

MX COOLSOCK / P.97



GRAY/ORG

CHAR/RED

BLUE/GRN

GRN/ORG

MX SOCK / P.97



BLK/RED

BLK/CYAN

CHAR/ORG

GRN/YEL

DUAL SPORT SOCK / P.97



GRAY/ORG

CHAR/RED

BLUE/GRN

GRN/ORG

BLITZ BOOTS / P.98



BLK/RED

BLK/GRN

RED/BLU

WHT/ORG

WHITE

BLACK

BLACK ATV

RATCHET BOOTS / P.99



WHITE

BLACK

WOMEN'S BLITZ BOOTS / P.134



BLK/MAGENTA

WHITE

BLITZ LS BOOTS / P.99



WHITE

BLACK

WHEELIE BAG / P.102



BLK/RED ORG

CIRCUIT BAG / P.103



BLK/RED ORG

EQUIP BAG / P.103



BLK/RED ORG

BARON GOGGLE BAG / P.106



BLK/RED ORG

RIVAL HELMET BAG / P.106



BLK/RED ORG

TECH VAULT PACK / P.106



BLK/RED ORG

SLAM BACKPACK / P.107



BLK/RED

BLK/WHT

RED/NAVY

GRN/BLUE

RESERVOIR BAG / P.104


BLK/RED ORG

STEEL/FLO GRN

HYDRANT BAG / P.105


BLK/RED ORG

CEMENT/ORG

STEEL/FLO GRN

VAPOR BAG / P.105


BLK/RED ORG

CEMENT/ORG

STEEL/FLO GRN

TECH BACKPACK / P.107


BLK/RED ORG

REPLACEMENT PARTS /

VERGE HELEMT LINER

GRY/CYN	2XS	XS	S	M	L	XL	2XL
0134-	1488	1489	1490	1491	1492	1493	1494


VERGE HELEMT CHEEKPADS

2XS (45MM)	XS (40MM)	S (35MM)	M (30MM)	L (35MM)	XL (30MM)	2XL (25MM)
0134-1481	0134-1482	0134-1483	0134-1484	0134-1485	0134-1486	0134-1487

VERGE HELMET REPLACEMENT VISORS

DAZZ	MAGENTA	0132-1002	OBJECTIV	MATTE BLK	0132-1005
DAZZ	FLO ORG/WHT	0132-1003	REBOUND	FLO GRN/BLK	0132-0914
VORTECHS	WHT/GRY	0132-1006	REBOUND	FLO ORG/BLK	0132-0915
VORTECHS	ORG/GRY	0132-1007	SOLID	MATTE BLACK	0132-0733
VORTECHS	GRY/NAVY	0132-1008	SOLID	WHITE	0132-0734

RATCHET BOOT REPLACEMENT PARTS /

BUCKLE KIT
3430-0332

TOE CAPS
3430-0394

STRAP KIT 7-11 12-15
BLACK 3430-0331 3430-0333

STRAP KIT 7-11 12-15
WHITE 3430-0334 3430-0335

BLITZ BOOT REPLACEMENT PARTS /

BUCKLE KIT BUCKLE KIT BUCKLE KIT BUCKLE KIT
BLACK 3430-0493 WHITE 3430-0494 RED 3430-0626 ORANGE 3430-0627

TOE CAPS MX
3430-0501
TOE CAPS ATV
3430-0499

STRAP KIT 7-11 12-15
BLACK 3430-0495 3430-0496
STRAP RECEIVER
3430-0713

STRAP KIT 7-11 12-15
WHITE 3430-0497 3430-0498
STRAP RECEIVER
3430-0714

STRAP KIT 7-11 12-15
RED 3430-0628 3430-0629

YOUTH BLITZ BOOT REPLACEMENT PARTS /

BUCKLE KIT BUCKLE KIT BUCKLE KIT BUCKLE KIT
BLACK 3430-0493 WHITE 3430-0494 RED 3430-0626 ORANGE 3430-0627

TOE CAPS
3430-0501

STRAP KIT 1-5 6-7
BLACK 3430-0507 3430-0508

STRAP KIT 1-5 6-7
WHITE 3430-0509 3430-0510

WOMEN'S BLITZ BOOT REPLACEMENT PARTS /

BUCKLE KIT
WHITE 3430-0494

BUCKLE KIT
MAGENTA 3430-0712

TOE CAPS MX
3430-0501

STRAP KIT 5-10
WHITE 3430-0506

BLITZ LS BOOT REPLACEMENT PARTS /

BUCKLE KIT
BLACK 3430-0493

BUCKLE KIT
WHITE 3430-0494

STRAP KIT 7-11 12-15
BLACK 3430-0495 3430-0496

STRAP KIT 7-11 12-15
WHITE 3430-0497 3430-0498

THOR

THORMX.COM

12267 CROSTHWAITE CIRCLE
POWAY, CA 92064

WWW.PARTSEUROPE.EU

PARTS
EUROPE

THOR IS A REGISTERED TRADEMARK. ALL RIGHTS RESERVED.
COPYRIGHT © 2016 LEMANS CORPORATION. PRICES AND SPECIFICATIONS SUBJECT TO CHANGE WITHOUT NOTICE.
REPRODUCTION OF THIS CATALOG WITHOUT WRITTEN PERMISSION IS PROHIBITED.



9901-1950